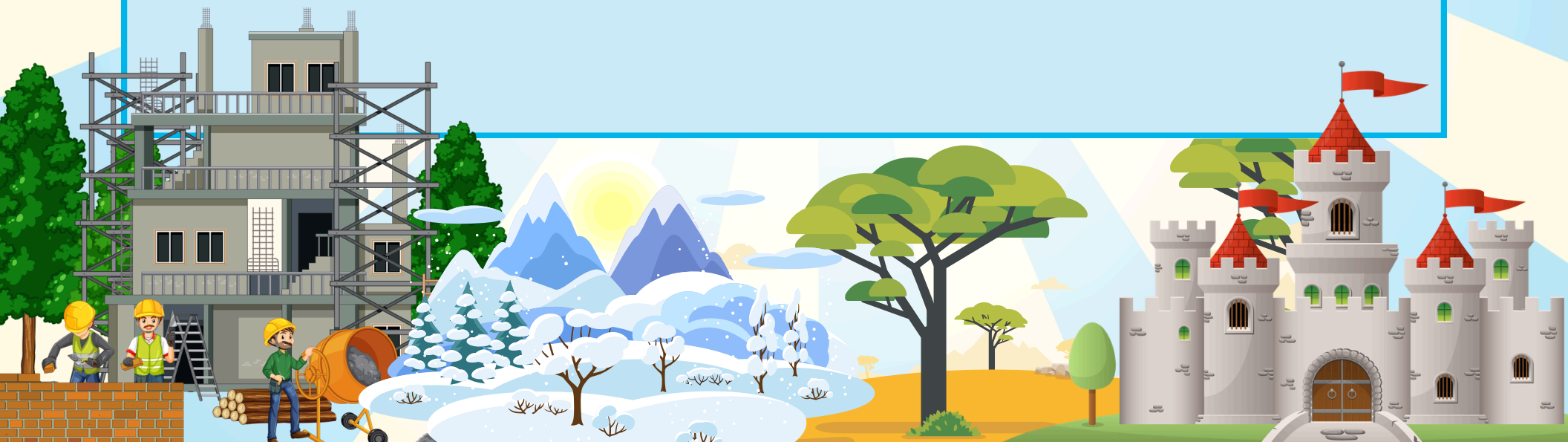




# INTERACTIVE SCENERY KIT



# INTERACTIVE SCENERY KIT INSTRUCTIONS

## MATERIALS NEEDED:

- Printable scenery kit (background + movable pieces)
- Cardstock or thick paper
- Scissors
- Glue stick, double sided tape, or velcro dots
- Laminator (optional, for durability)

## STEP-BY-STEP INSTRUCTIONS:

### 1. PRINT & PREPARE

- Print the background scene on a full sheet of paper or cardstock.
- Print the interactive pieces separately.

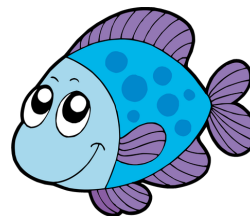
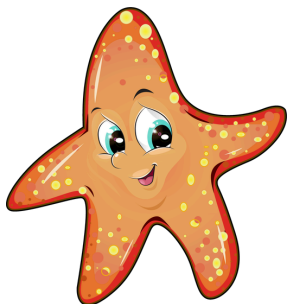
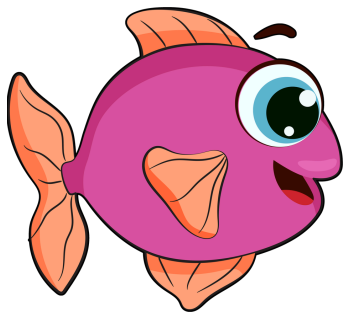
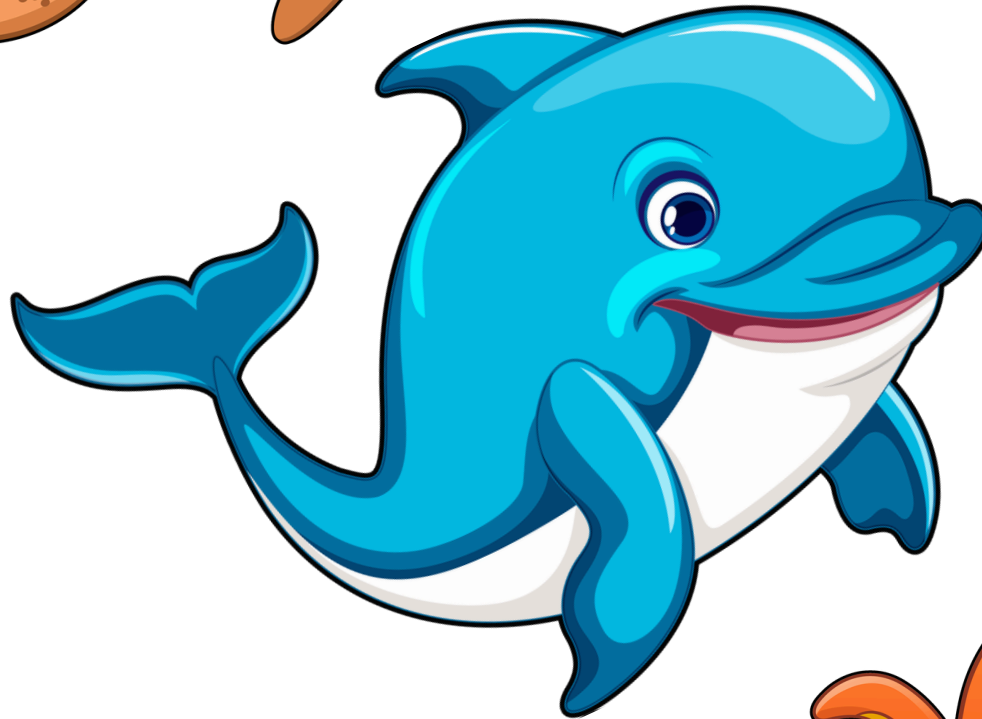
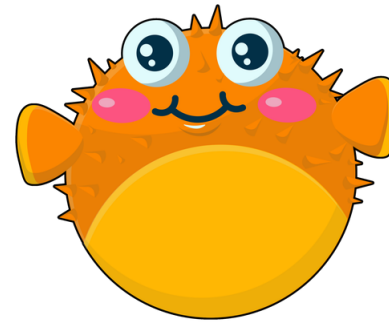
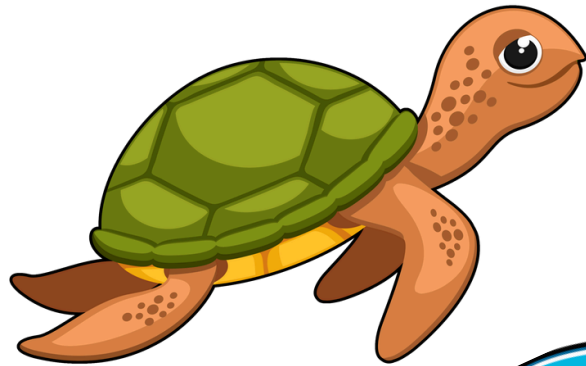
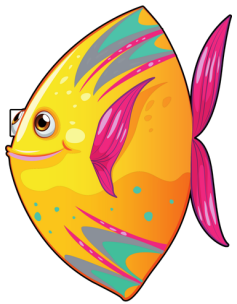
### 2. CUT OUT THE PIECES

- Carefully cut out all movable elements, such as characters, animals, vehicles, or seasonal objects.

### 3. ASSEMBLE THE SCENE

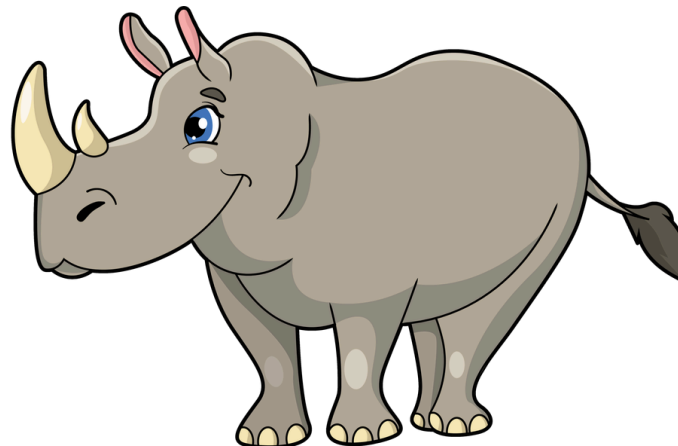
- **Glue Stick, Double Sided Tape, or Velcro Dots** – Allow children to have fun assembling the characters to the background scene with either a glue stick, double sided tape, or velcro dots.





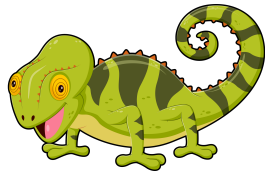






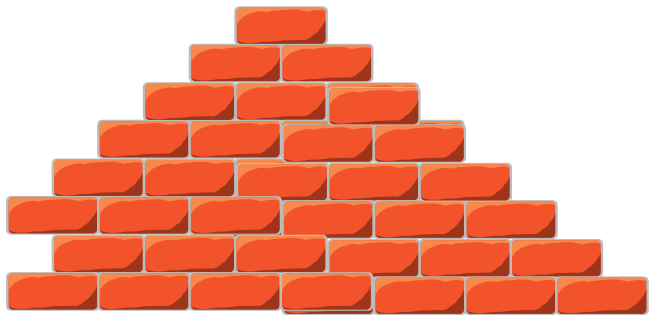
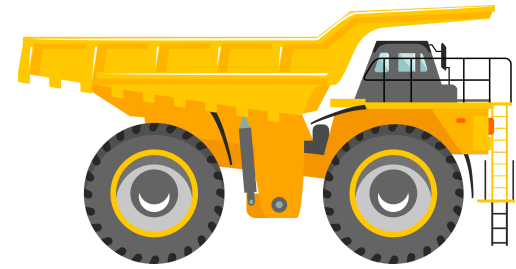
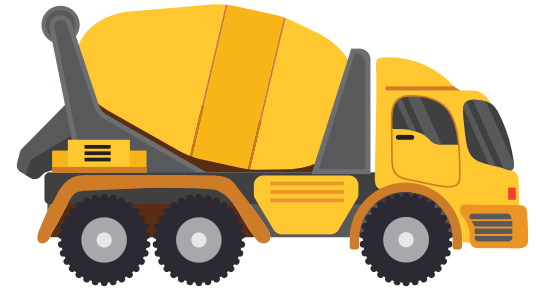
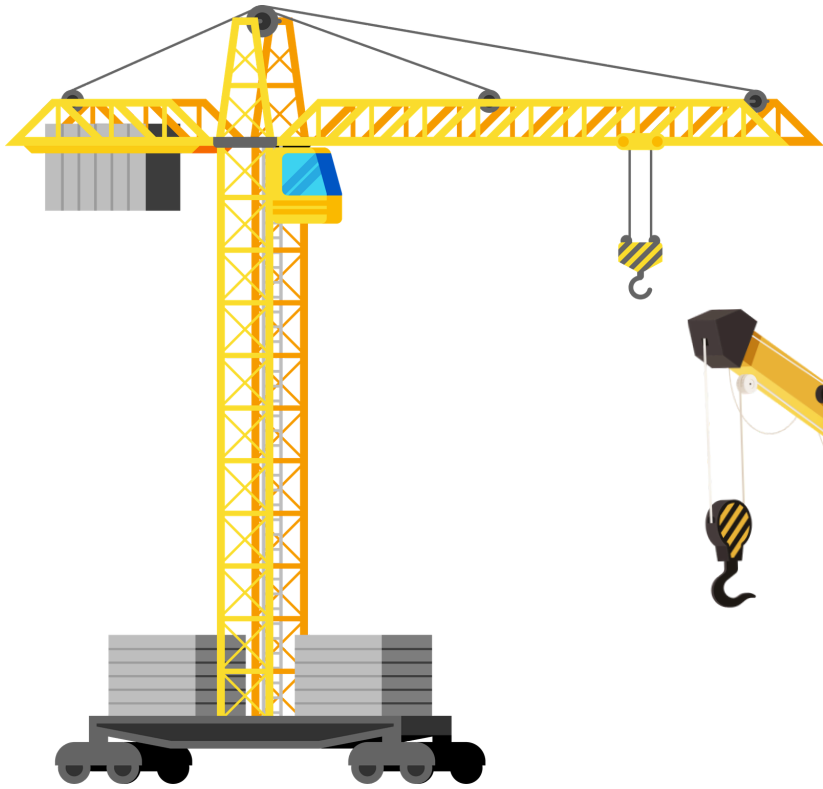












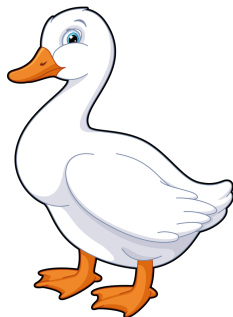
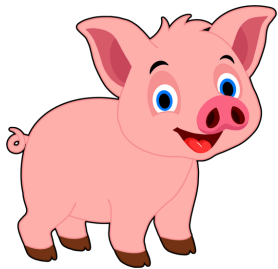






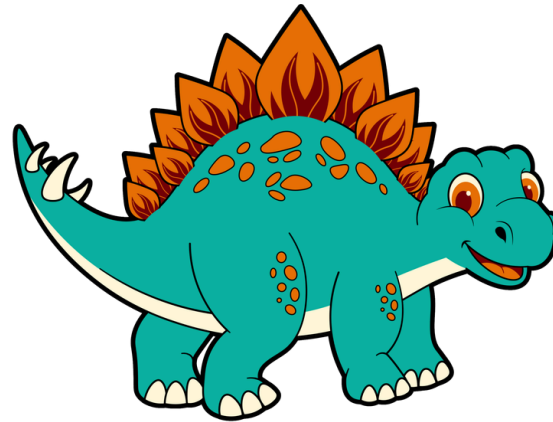
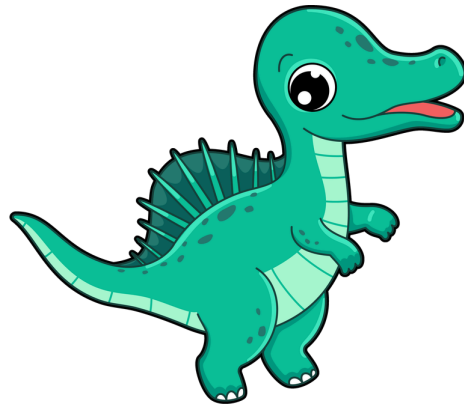
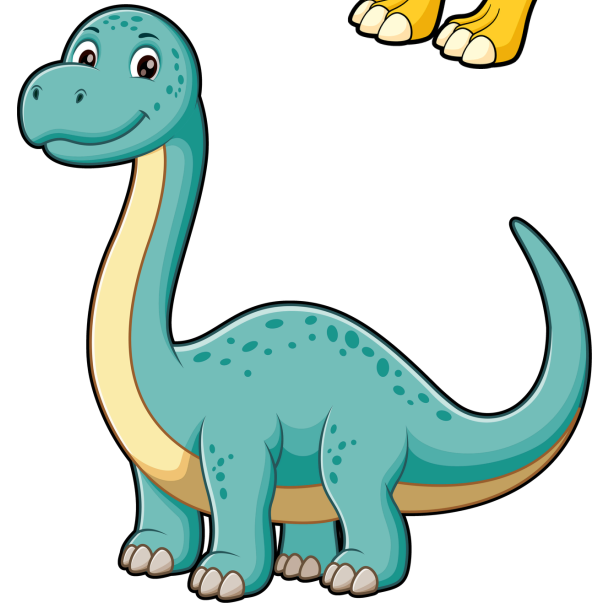
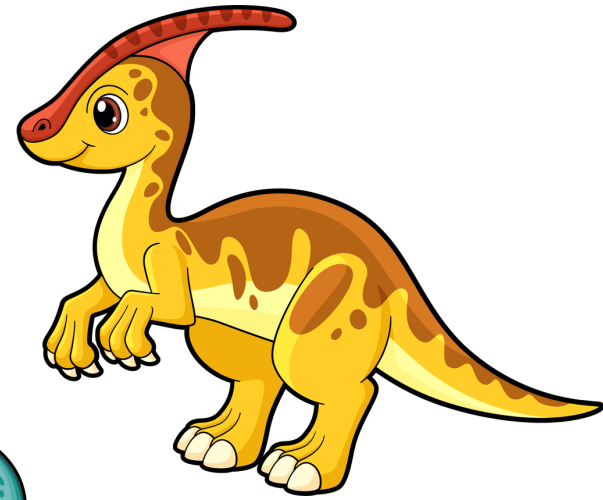






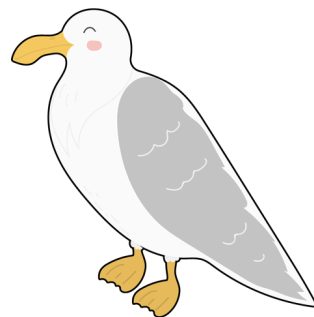
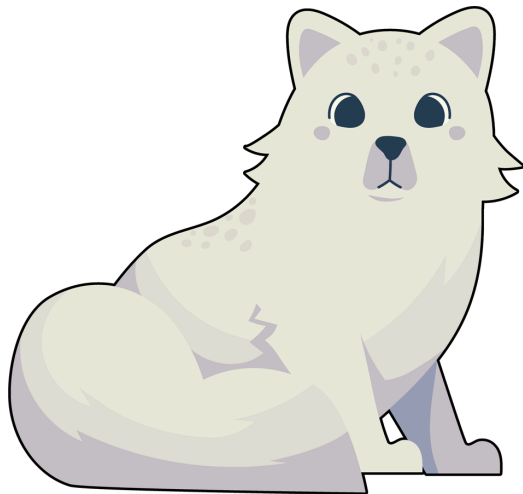
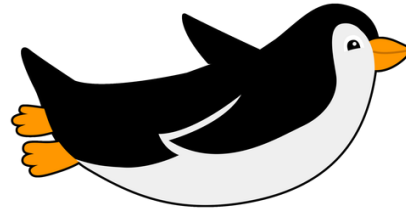
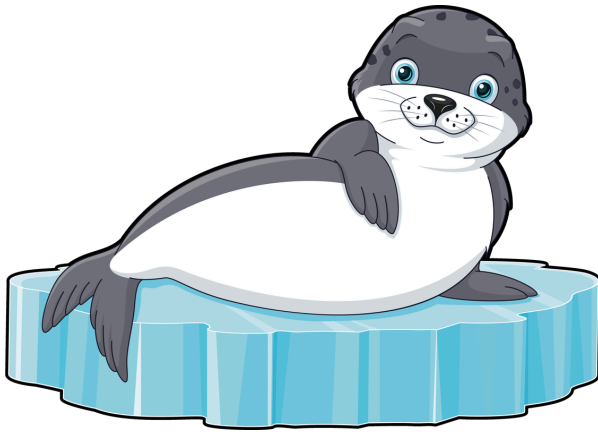
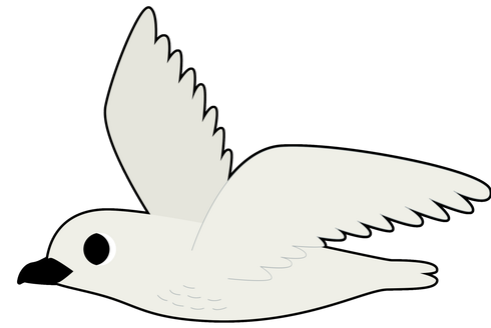






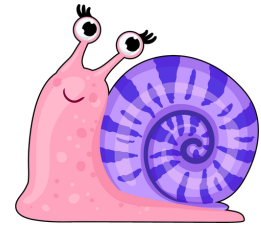
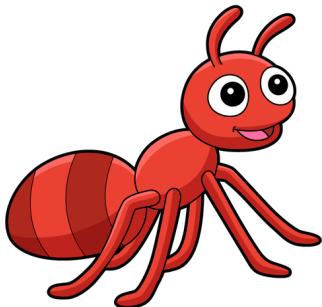
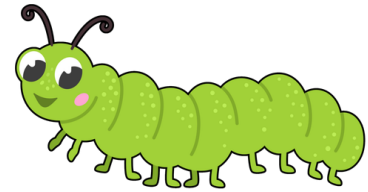
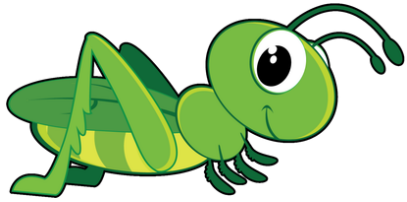
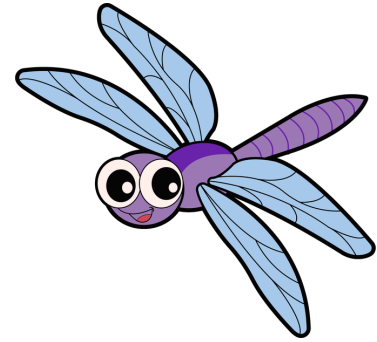










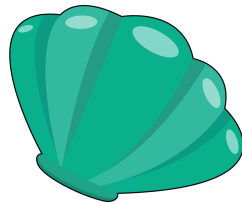
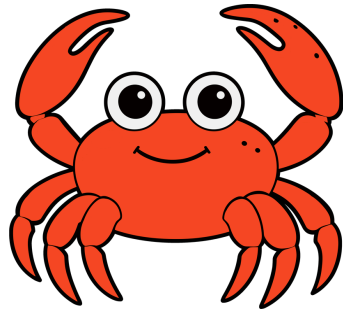
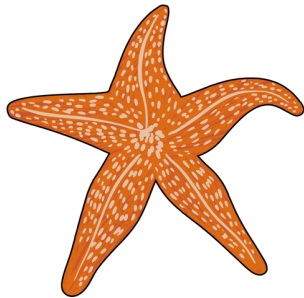
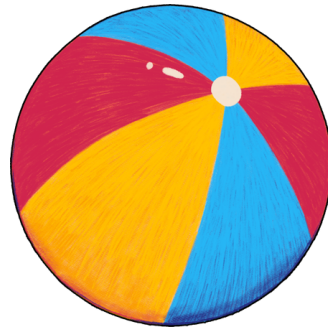
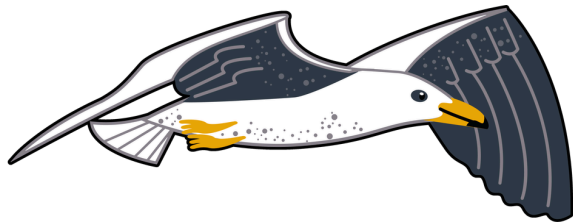
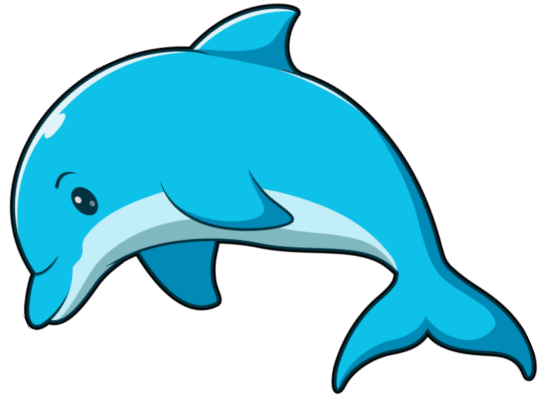




Garden



Garden







RESCUE