

MOTH

Life Cycle & Activity Bundle



MOTH VS. BUTTERFLY

Place a checkmark on each correct answer.

1. Comes out at night:

Butterfly

Moth

2. Has fuzzy body:

Butterfly

Moth

3. Has clubbed antennae:

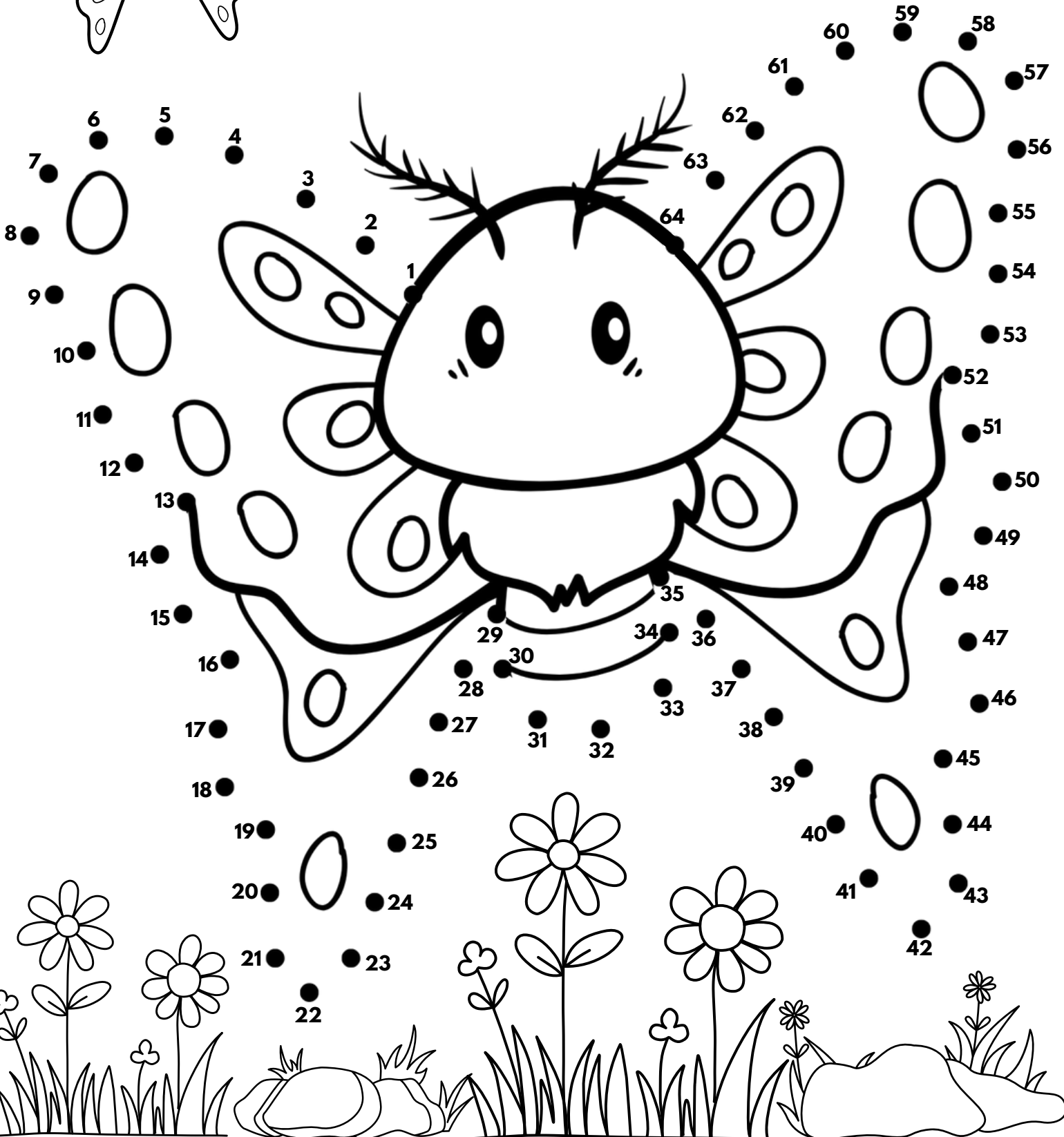
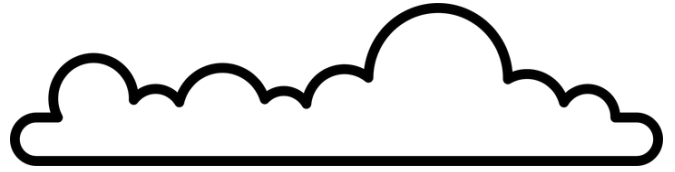
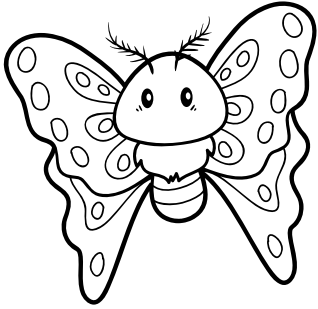
Butterfly

Moth

WHAT IS A MOTH?

A moth is an insect that looks like a butterfly. Most moths come out at night. They have fuzzy bodies and a feathery antennae.

MOTH DOT TO DOT



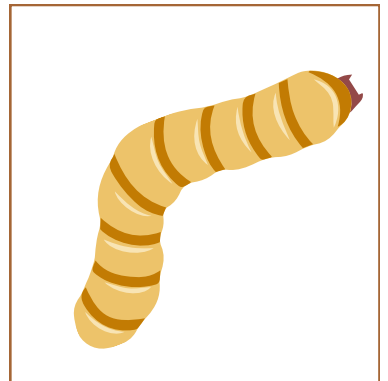
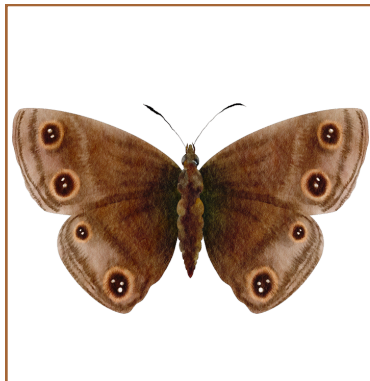
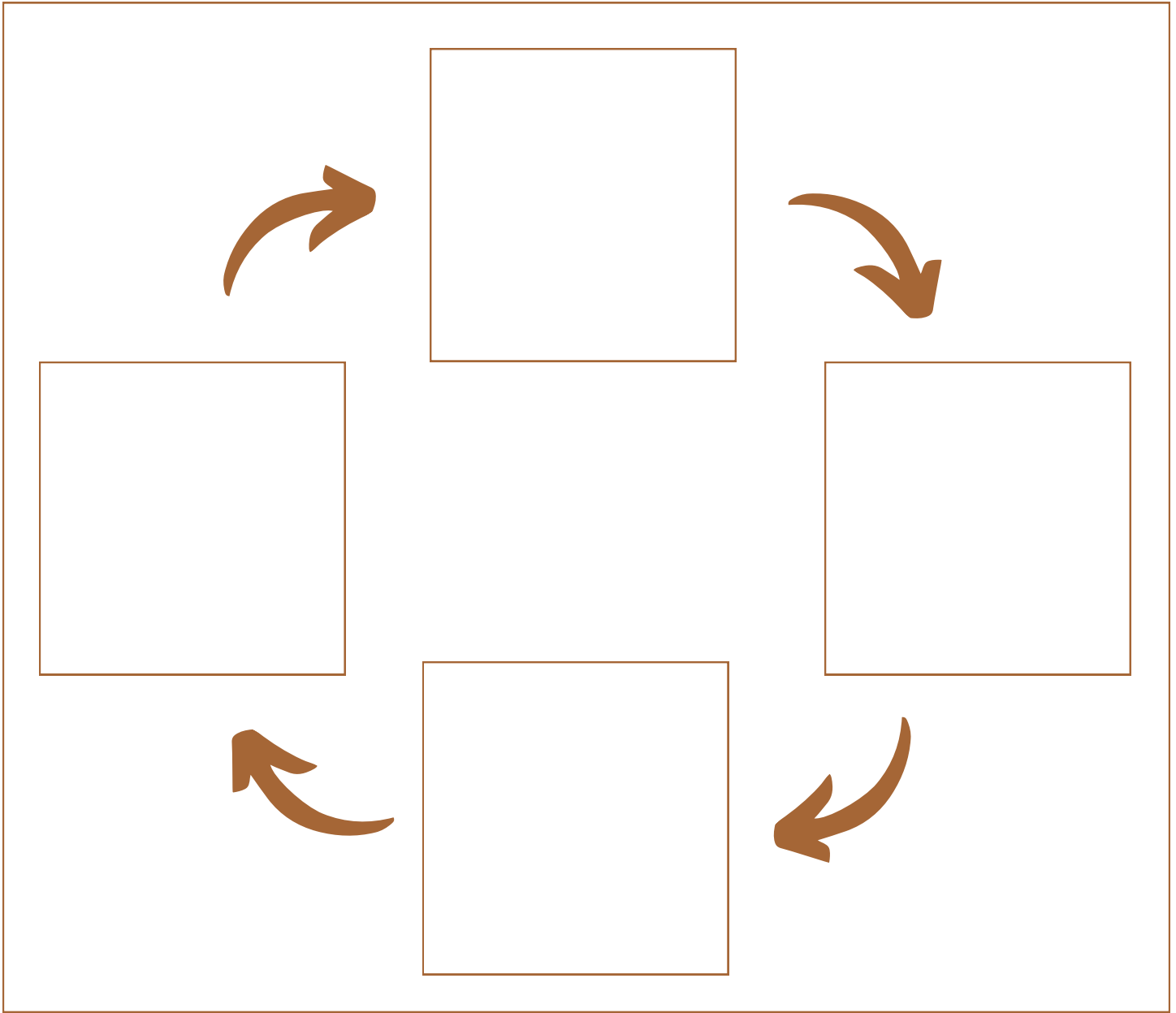
COLOR A MOTH!

Color a moth. Use grays, browns, or any colors you like!



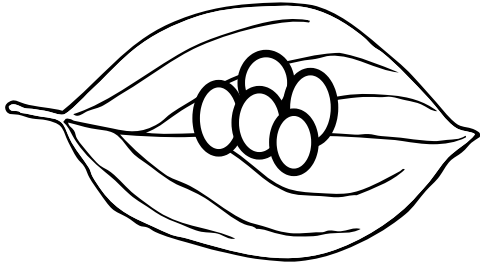
MOTH LIFE CYCLE

Cut and paste the moth life cycle in the correct order.

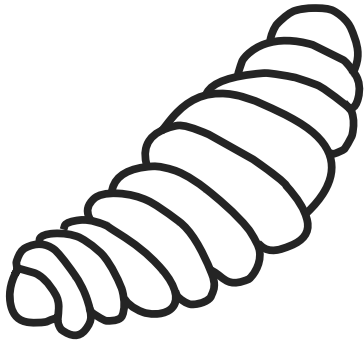


LIFE CYCLE OF A MOTH

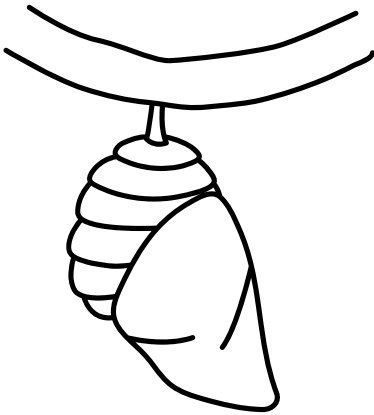
Color the pictures and trace the words.



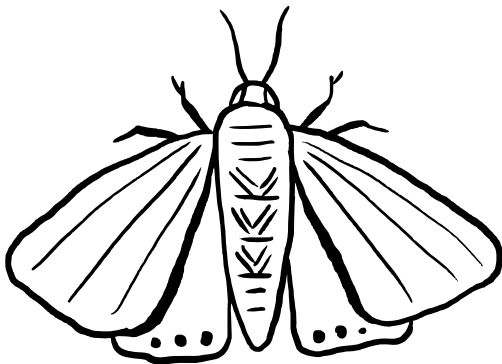
Egg



Larva



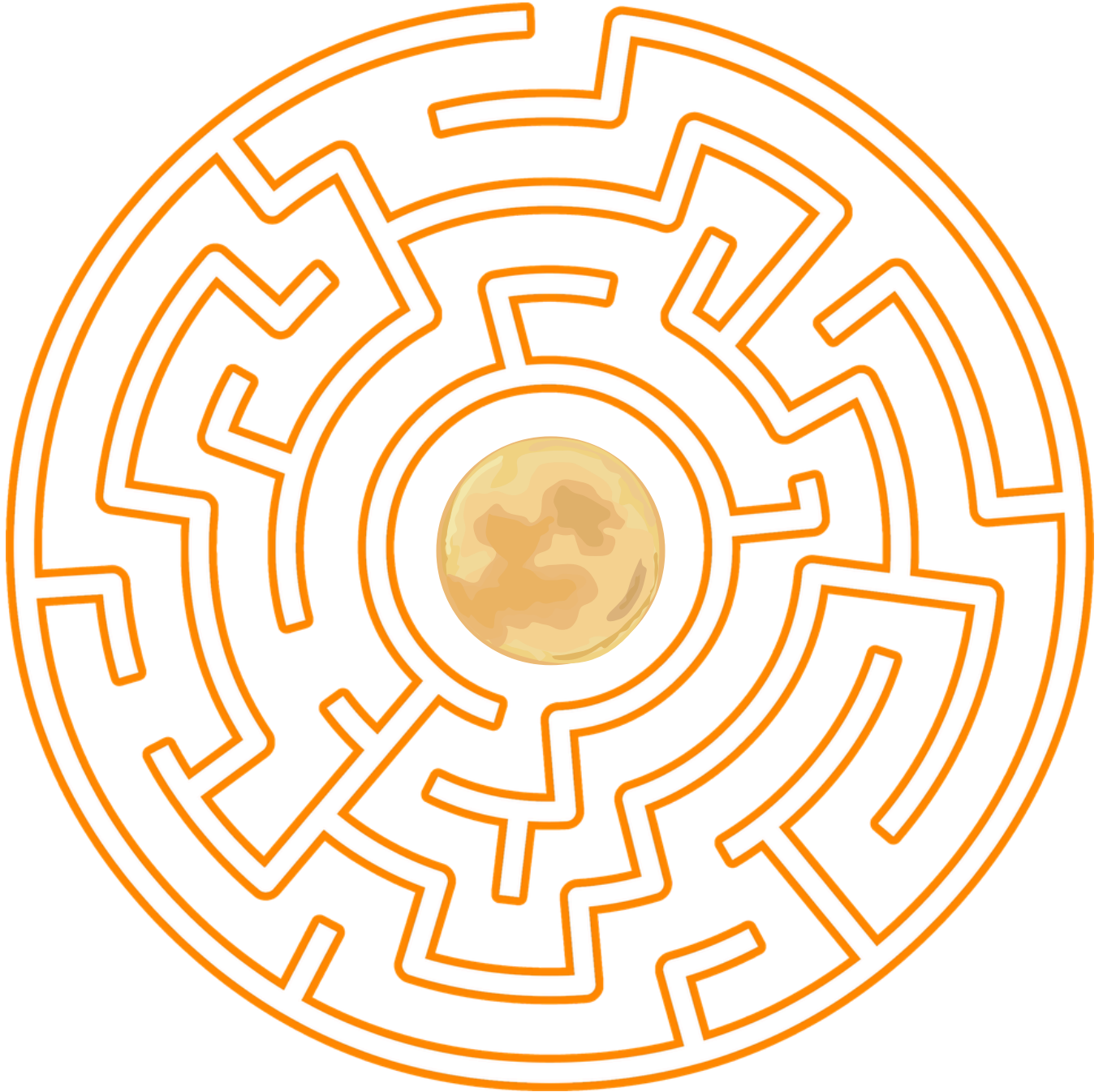
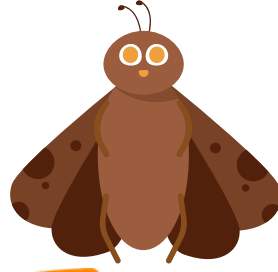
Pupa



Adult

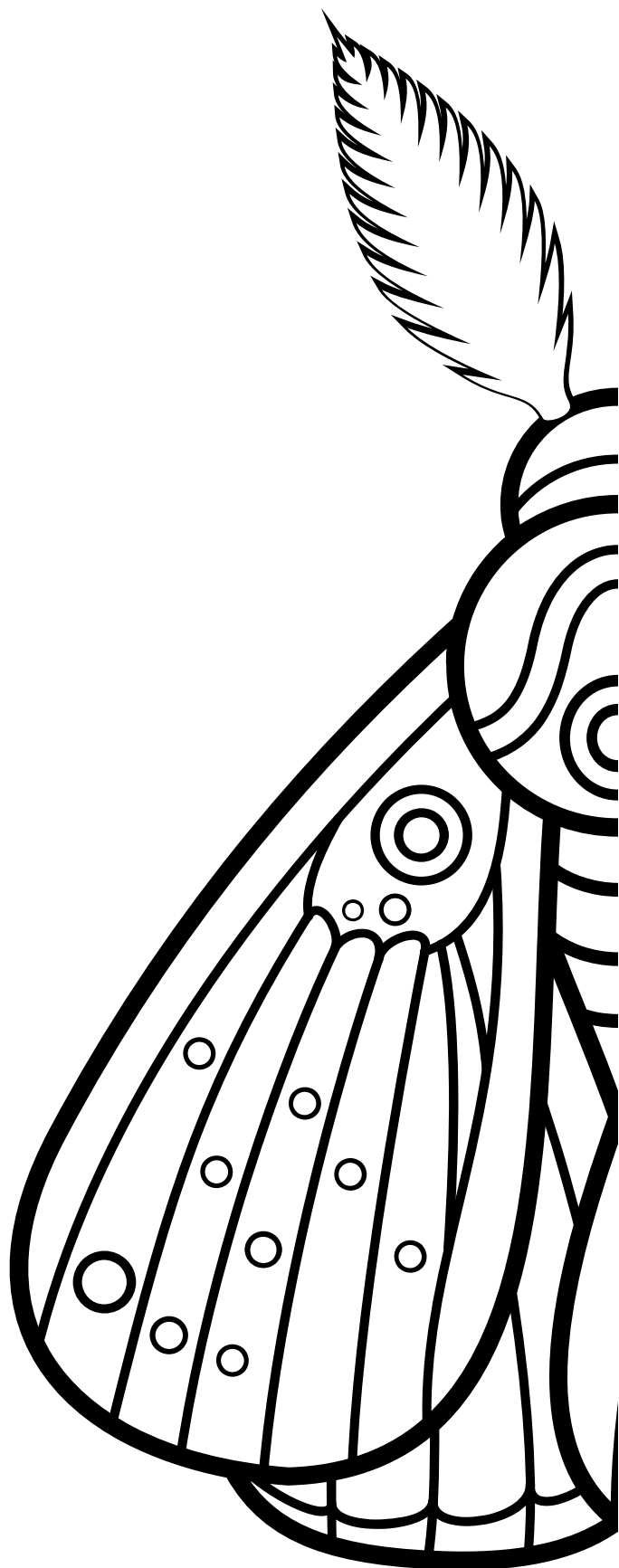
MOTH MAZE

Help the moth find the moonlight!



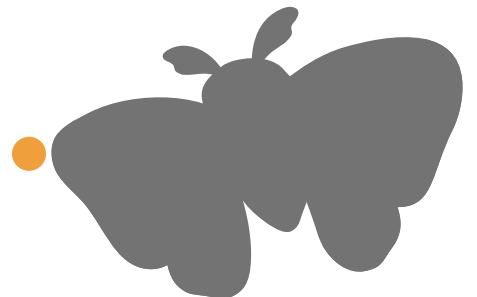
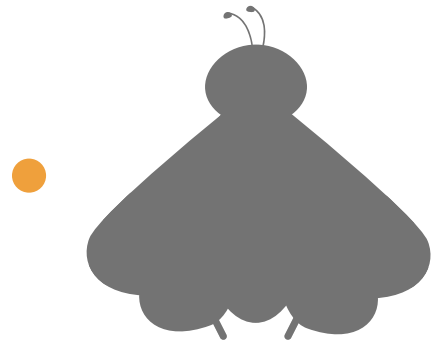
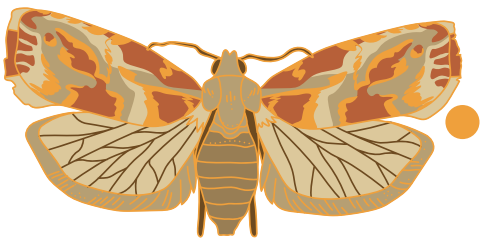
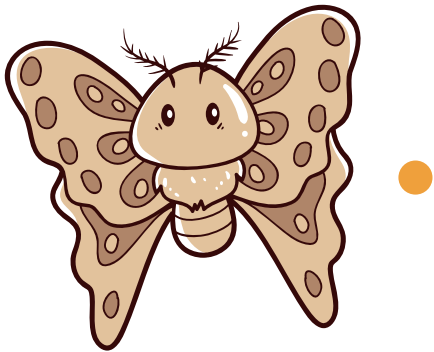
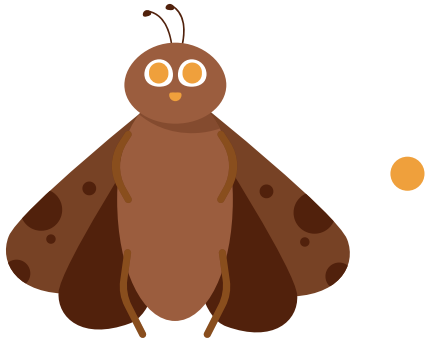
MOTH SYMMETRY DRAWING

Complete the other side to make it symmetrical.

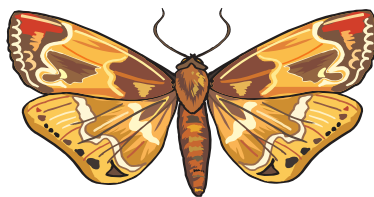
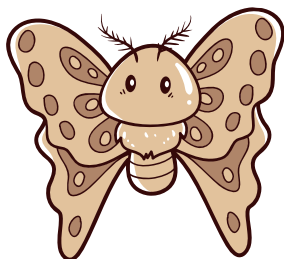
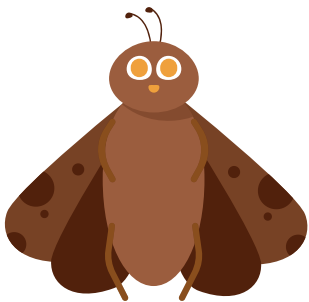
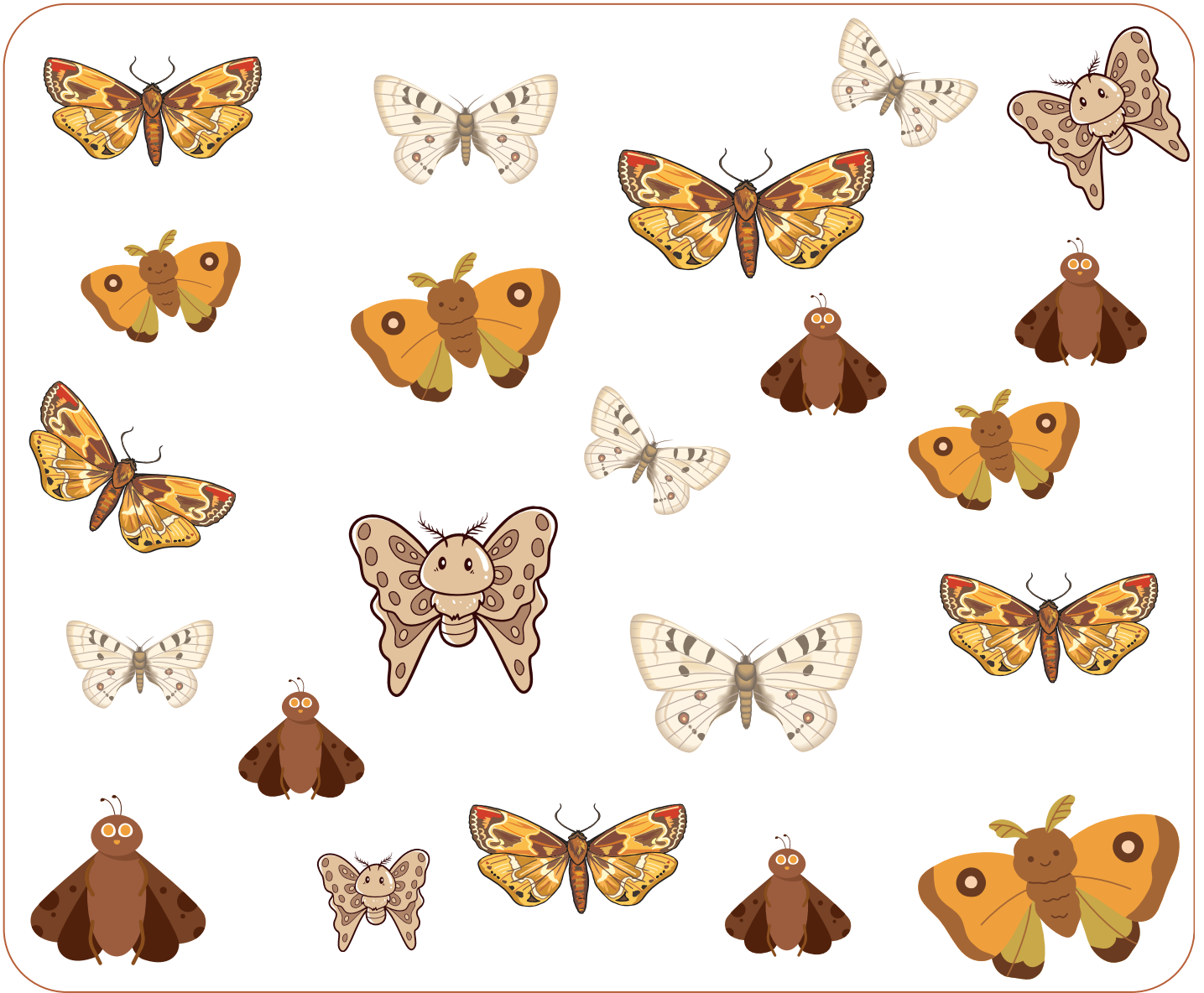


MOTH PATTERN MATCH

Match each moth with its shadow.



MOTH I SPY



COLOR - BY - NUMBER

1 - Gray

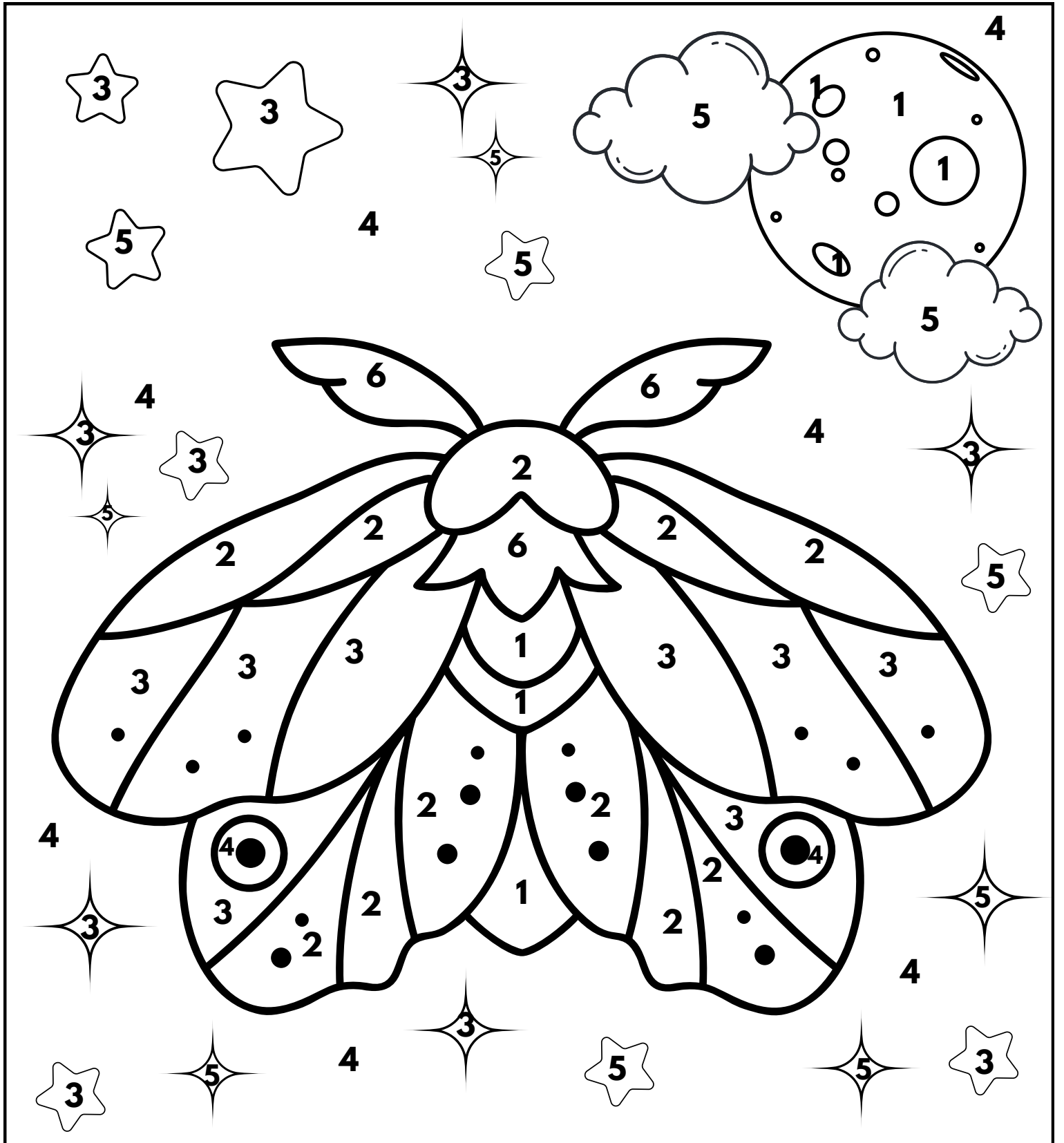
2 - Brown

3 - Yellow

4 - Dark Blue

5 - White

6 - Black



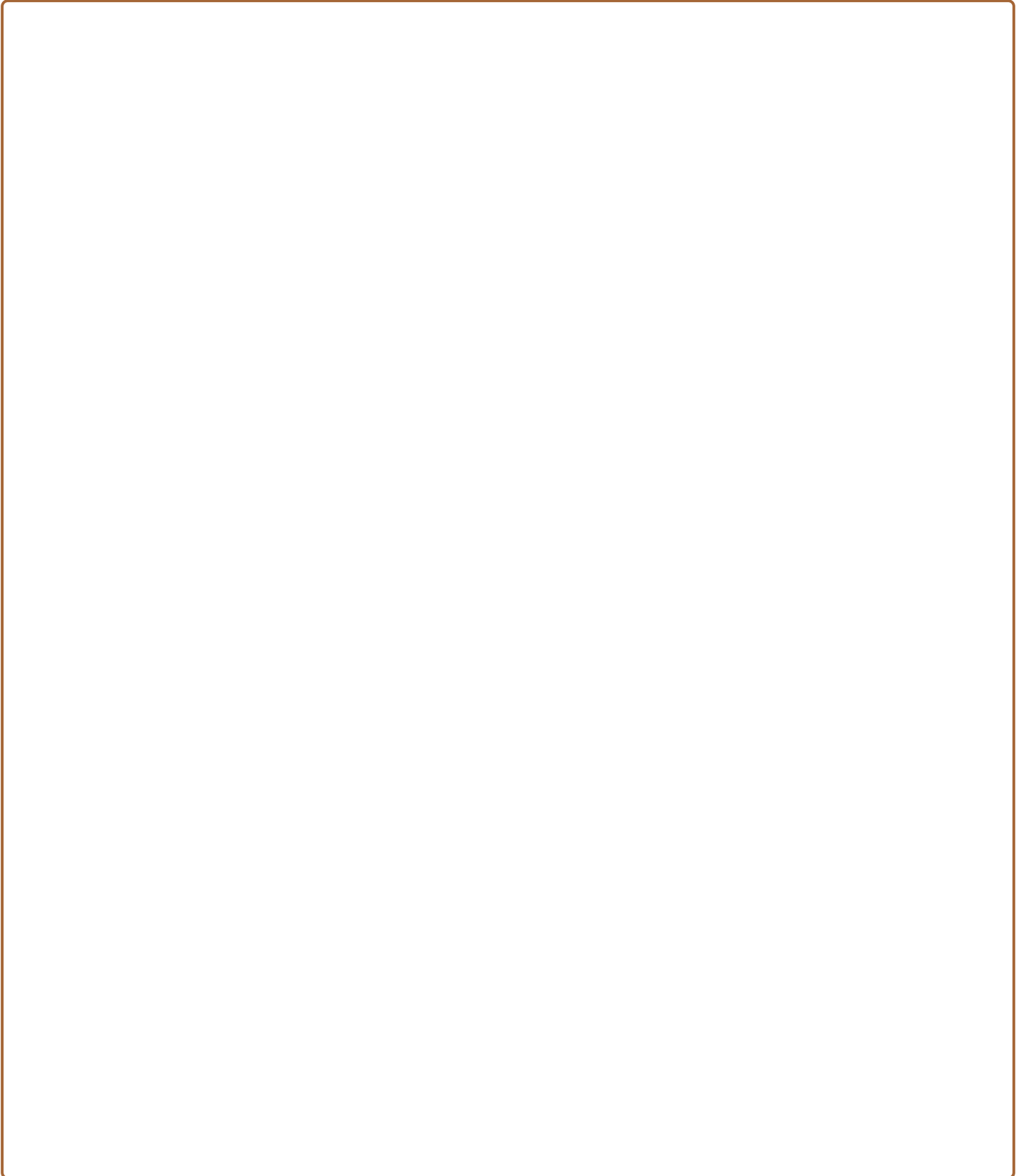
MOTH WORDSEARCH

B	E	A	E	G	G	D	E	E	R	W
A	L	P	F	U	Z	Z	Y	Y	S	I
N	O	N	G	D	X	Q	U	E	H	N
T	A	I	M	L	M	A	S	A	O	G
E	D	G	A	O	O	Z	G	P	E	S
N	U	H	W	G	T	D	I	U	S	E
N	G	T	D	K	H	R	R	P	H	A
A	M	G	H	I	I	A	L	E	I	D
E	C	D	T	H	O	H	V	A	G	I
G	E	O	E	Y	E	U	L	R	J	E
O	C	O	C	O	O	N	O	U	A	T
S	D	R	U	Z	L	T	H	G	I	L

- MOTH
- WINGS
- ANTENNAE
- COCOON
- LARVA
- EGG
- PUPA
- NIGHT
- LIGHT
- FUZZY

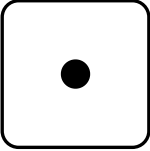
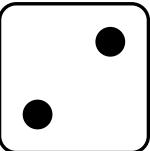
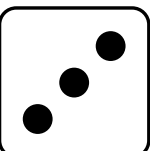
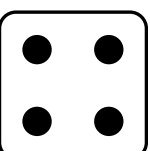
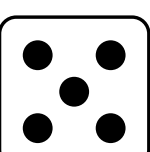

DESIGN YOUR OWN MOTH

Draw your own moth with unique wings and colors!



ROLL - A - STORY


Roll the dice 3 times to create a story about a moth using the elements below.

	SETTING	WHAT HAPPENS?	PROBLEM
	In a dark forest	Gets lost in the wind	It starts to rain
	Near a porch light	Finds a glowing flower	The light goes out
	In a garden full of flowers	Hides from a hungry owl	A net is coming!
	Inside a cozy barn	Flies into a glowing lamp	The moth forgets its way home
	Flying under the stars	Meets a butterfly friend	A curious cat appears
	On a classroom windowsill	Turns into a glowing moth	The cocoon begins to crack...


Write your story:

COUNT THE MOTH


Count the moths and circle the right number.



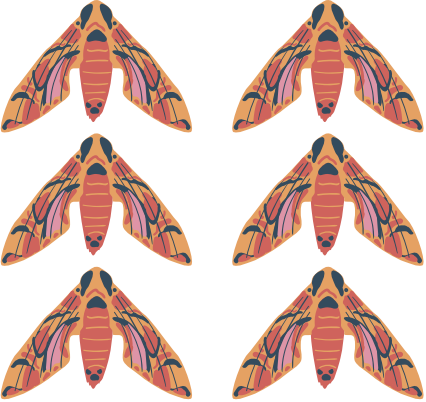
9 4 2



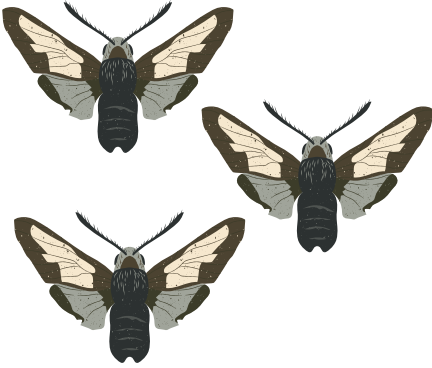
5 6 9



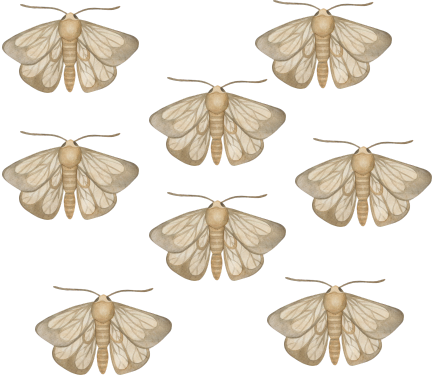
1 7 3



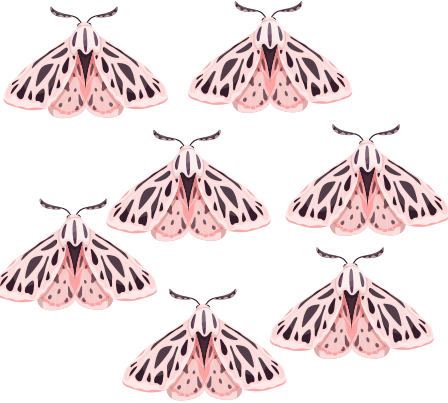
9 4 6




3 1 7



5 6 8



7 5 6



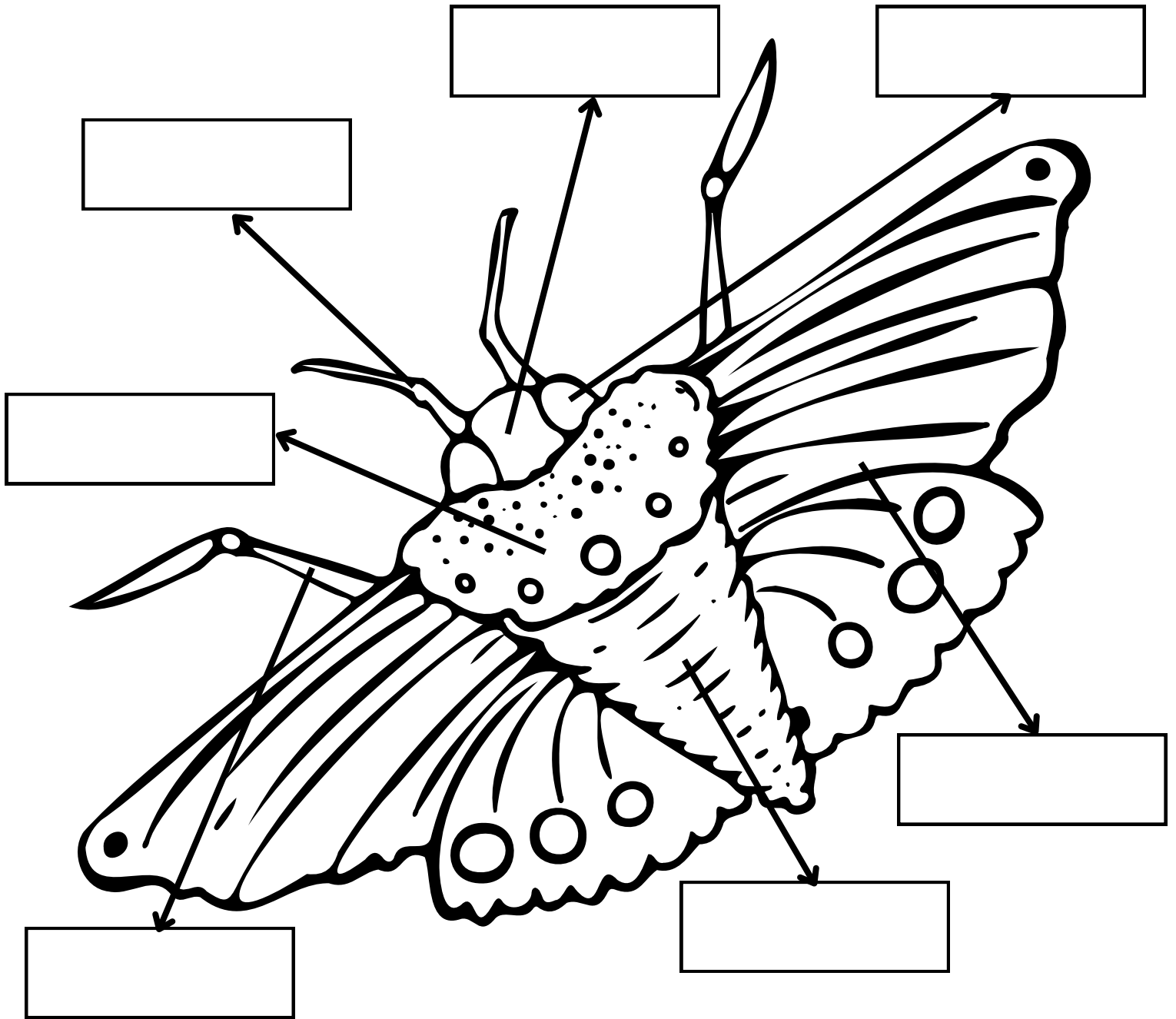
5 3 8



1 2 3

PARTS OF A MOTH

Cut out the moth parts below. Paste them in the correct places on the moth outline. Then, color the moth.



Head

Abdomen

Wings

Antennae

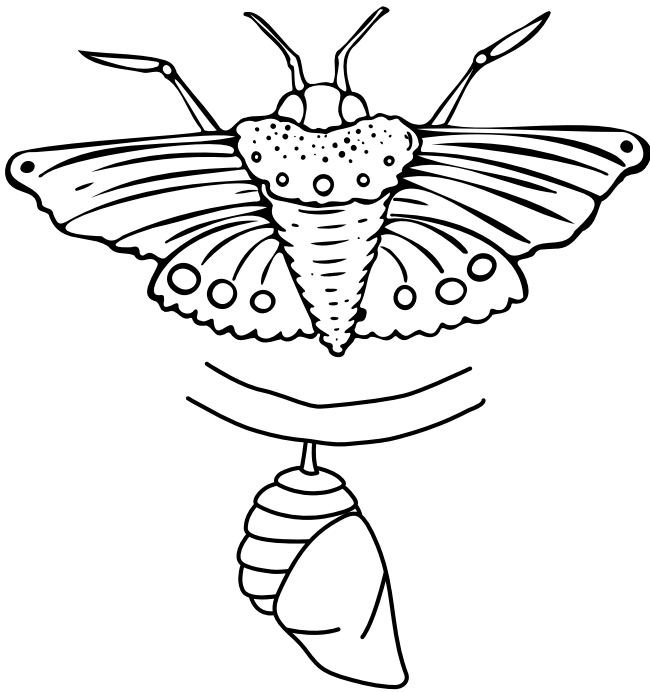
Thorax

Eyes

Legs

VOCABULARY TRACE

Trace the words and color the picture.

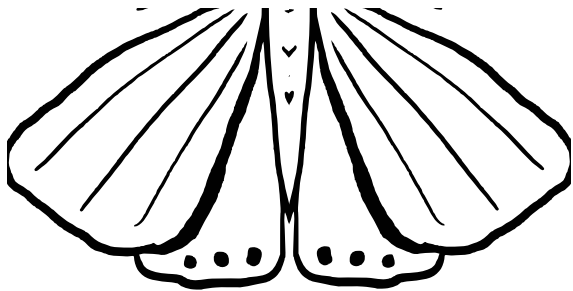


Moth

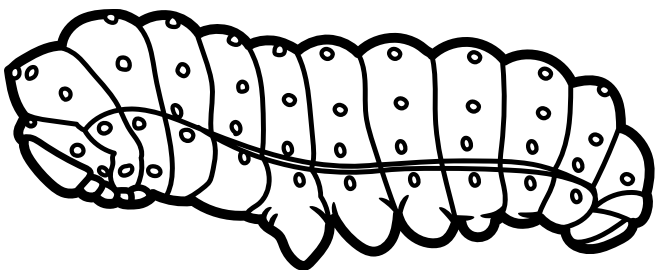
Cocoon



Antennae



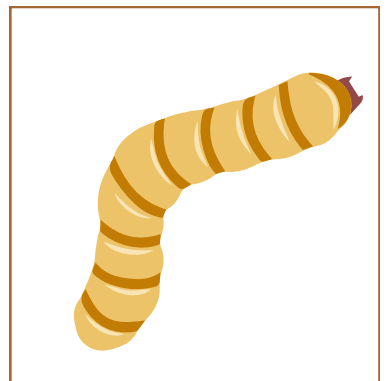
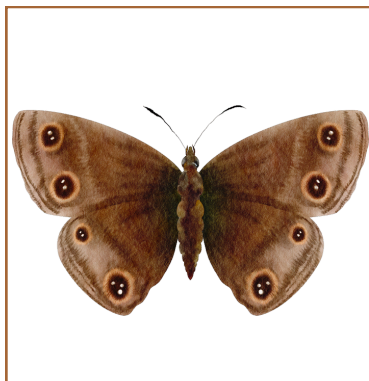
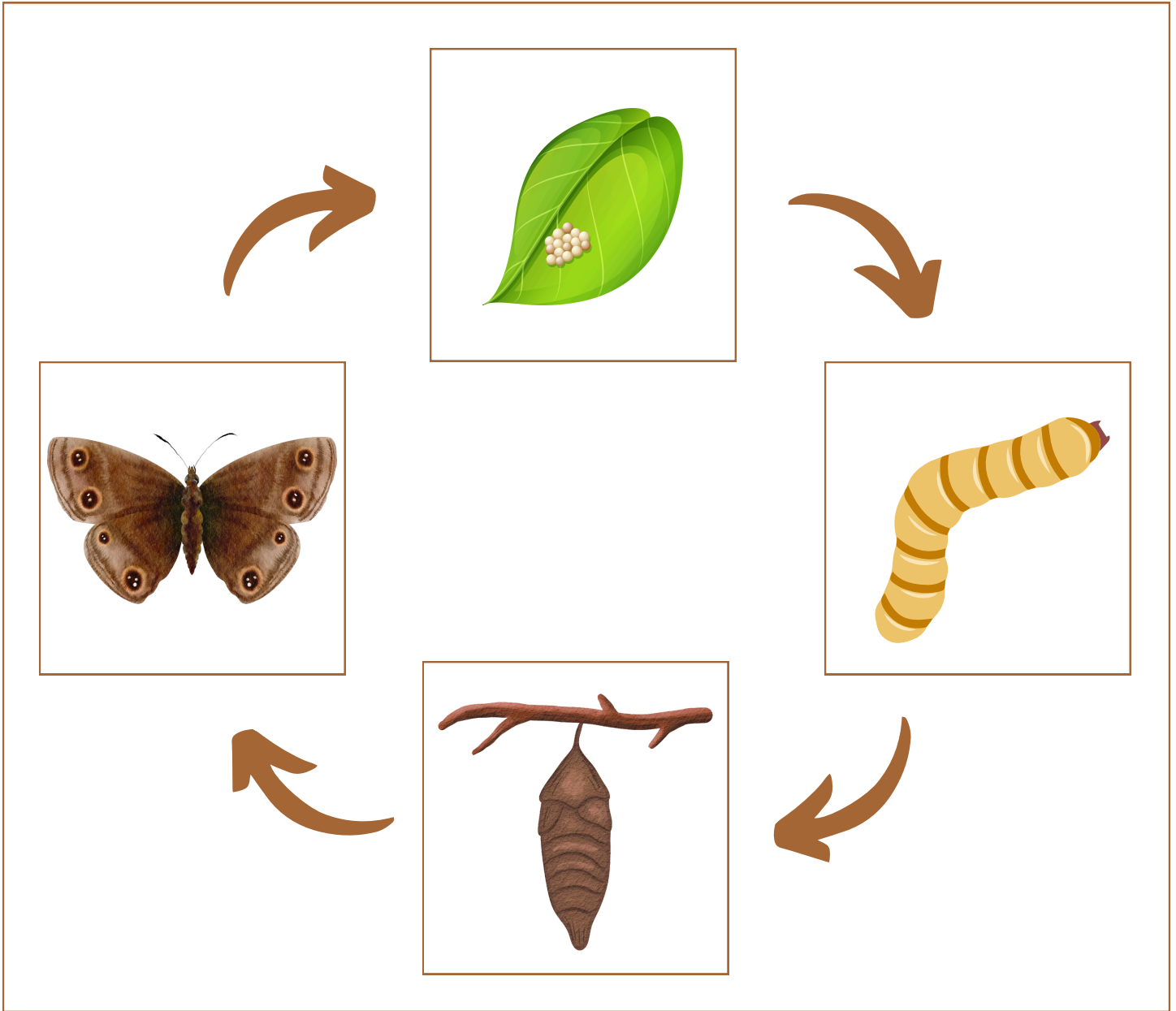
Wings



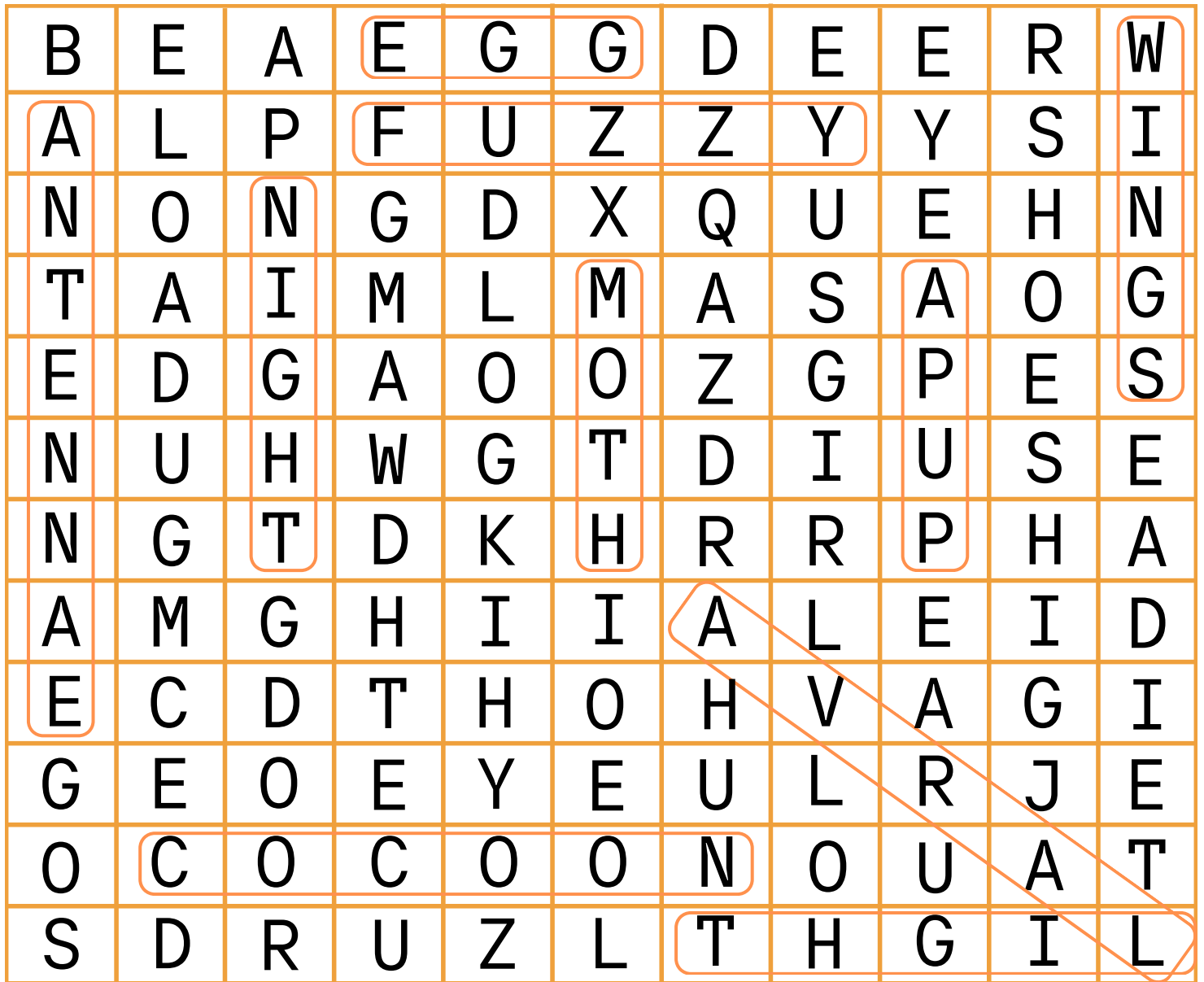
Larva

MOTH LIFE CYCLE

Cut and paste the moth life cycle in the correct order.



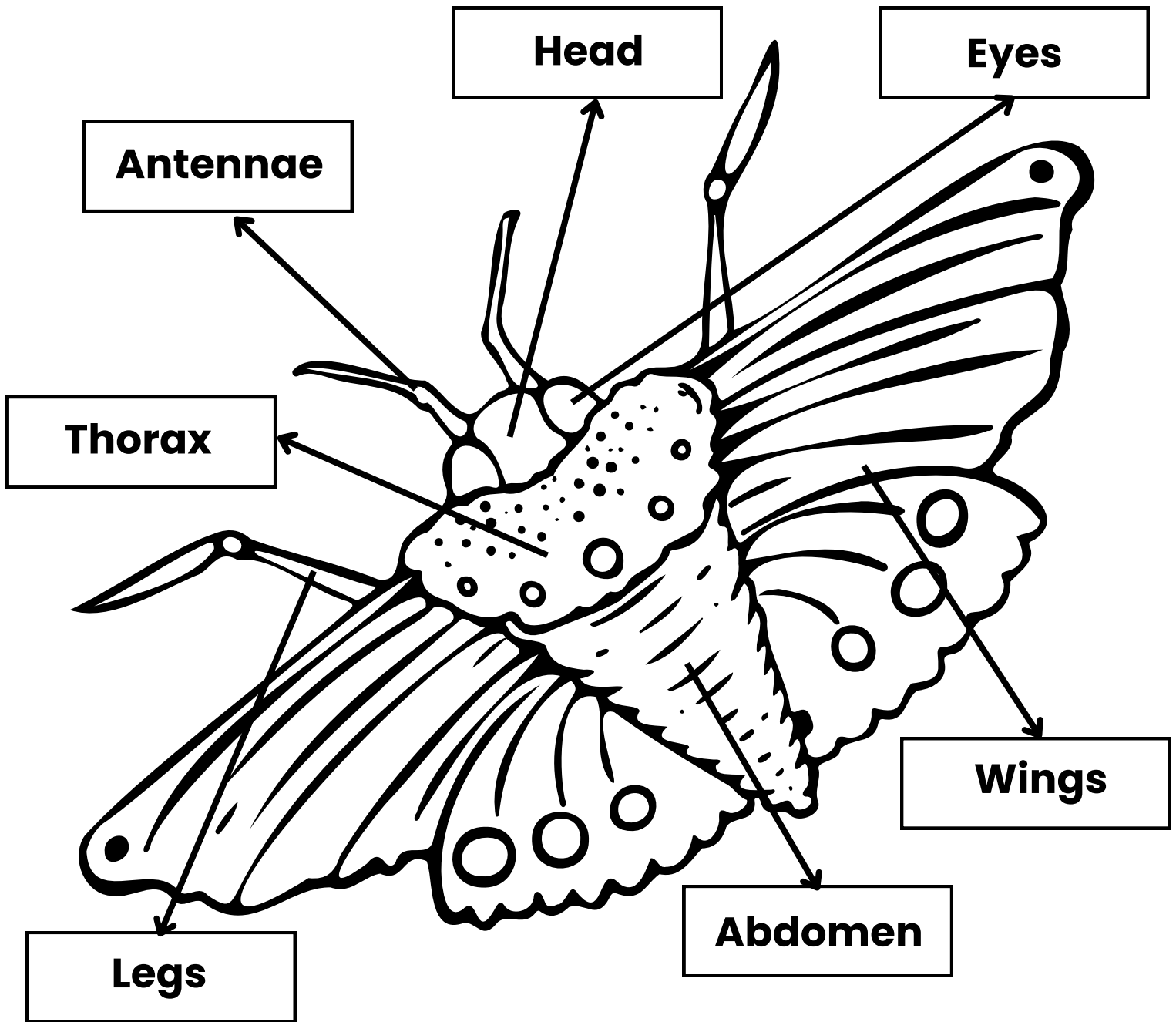
MOTH WORDSEARCH



- ~~MOTH~~
- ~~WINGS~~
- ~~ANTENNAE~~
- ~~COCOON~~
- ~~LARVA~~
- ~~EGG~~
- ~~PUPA~~
- ~~NIGHT~~
- ~~LIGHT~~
- ~~FUZZY~~

PARTS OF A MOTH

Cut out the moth parts below. Paste them in the correct places on the moth outline. Then, color your moth.



Head

Abdomen

Wings

Antennae

Thorax

Eyes

Legs