

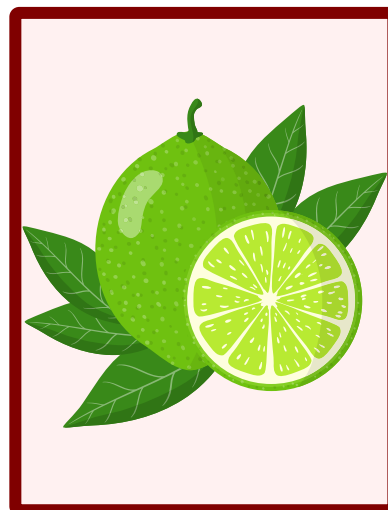
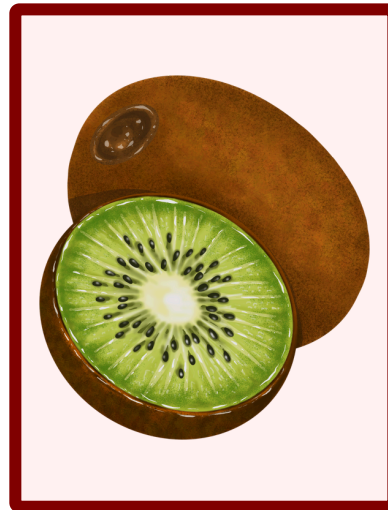
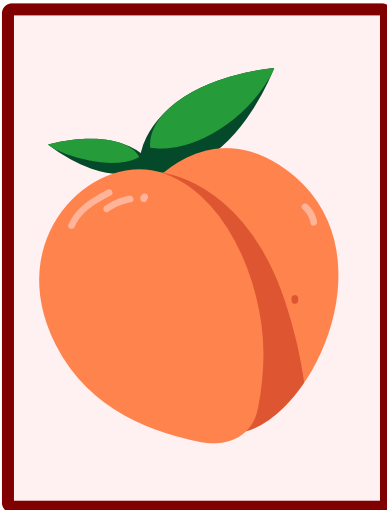
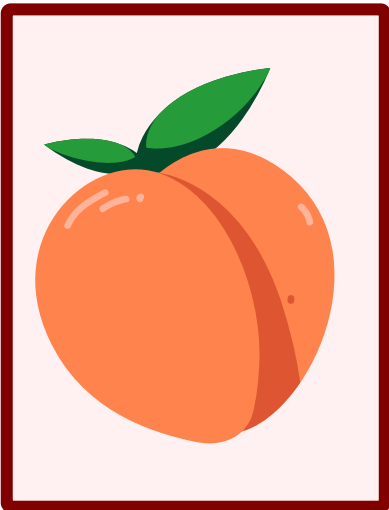
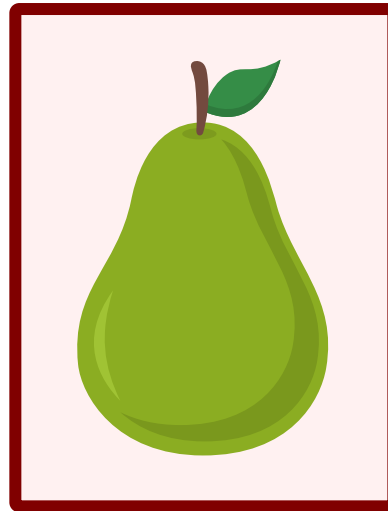
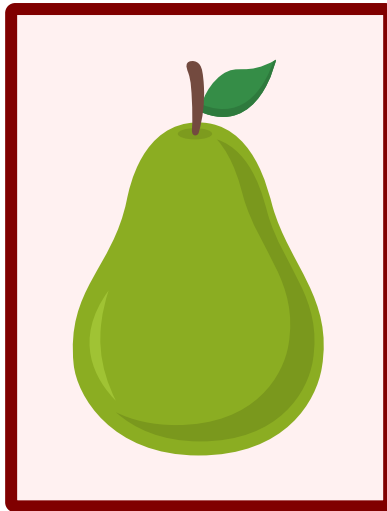
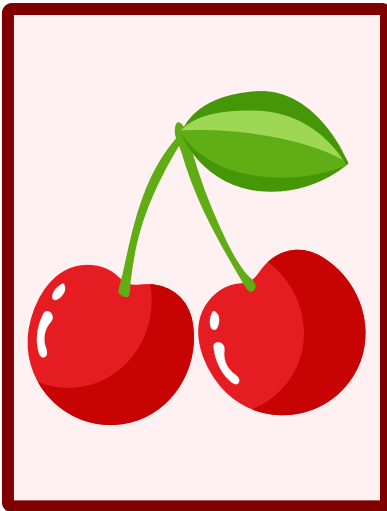
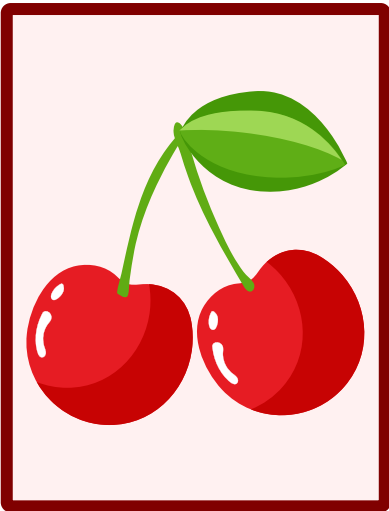


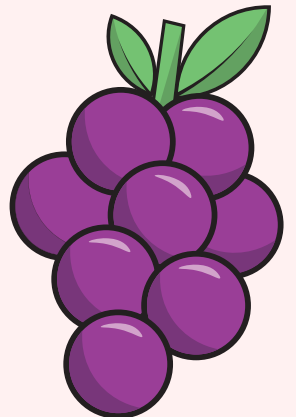
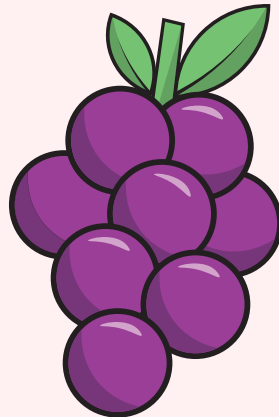
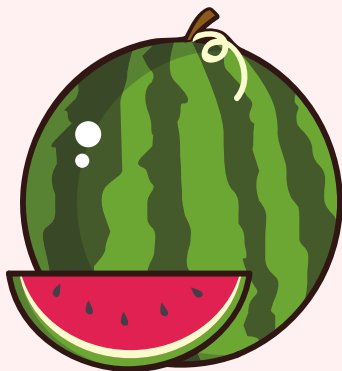
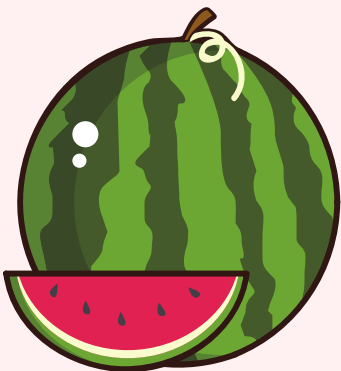
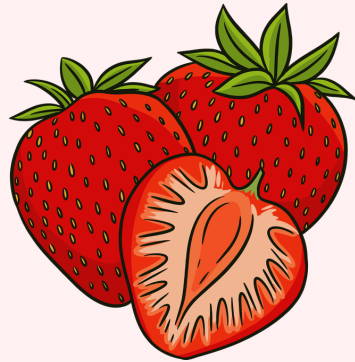
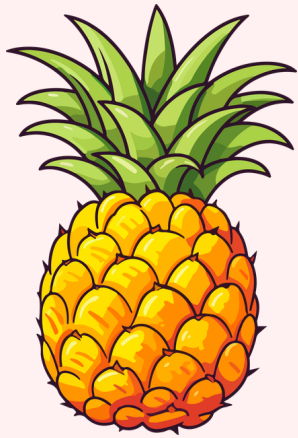
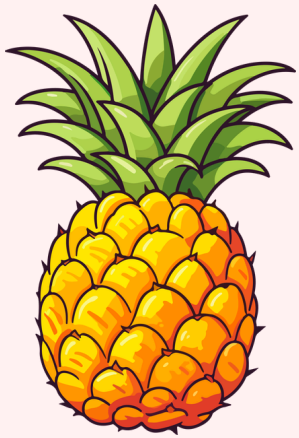
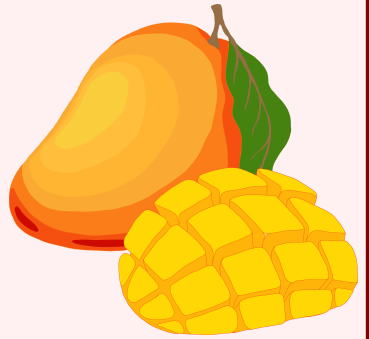
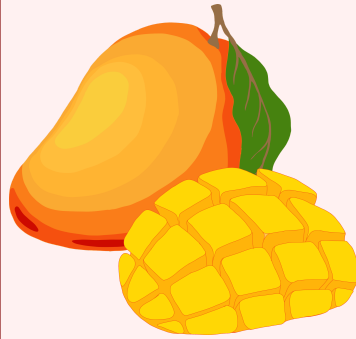
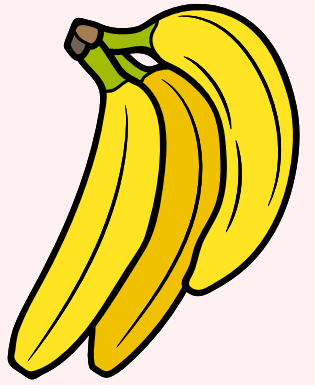
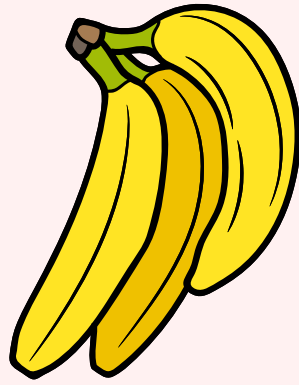
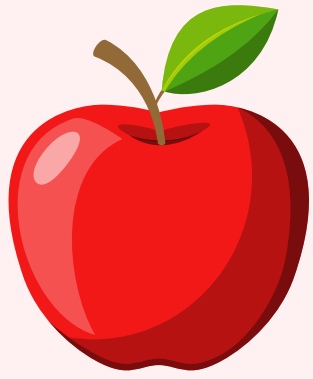
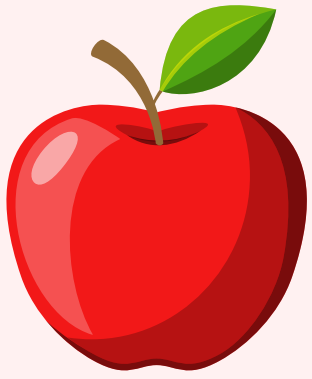
FRUIT

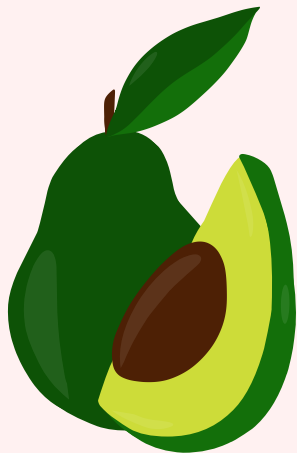
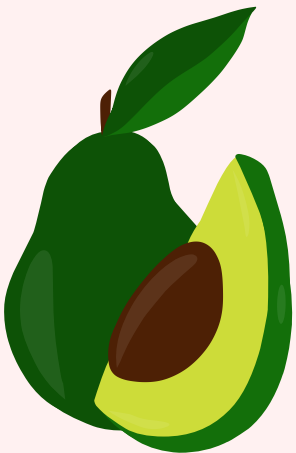
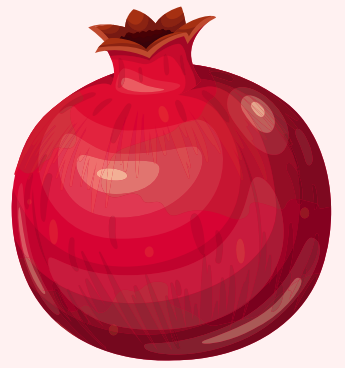
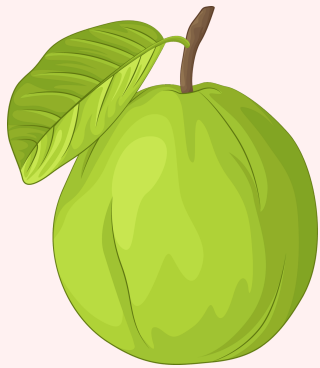
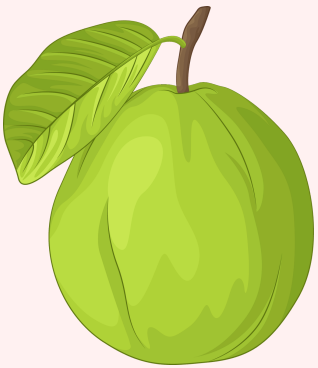
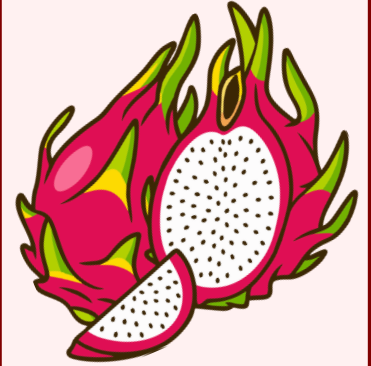
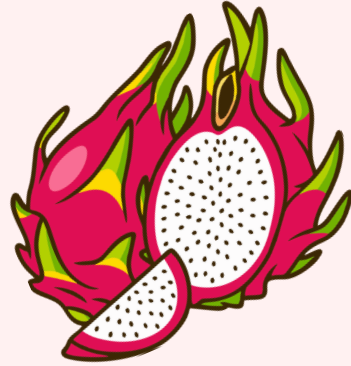
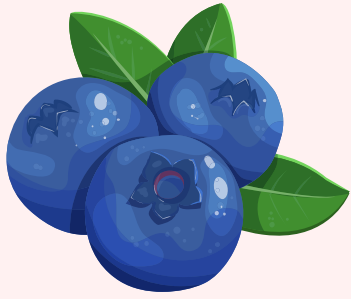
**Memory
Games**

FRUIT PICTURE MATCH

Turn over two cards. If they match, keep them. If not, turn them back over. Find all the pairs to win



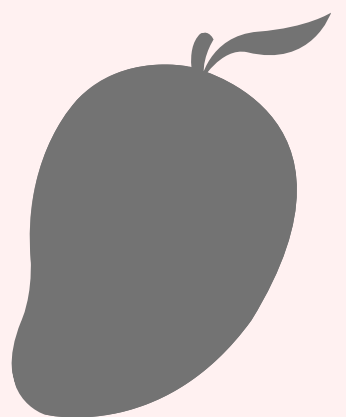
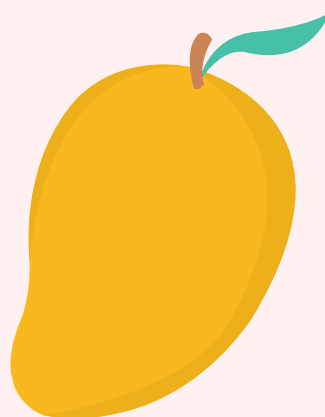
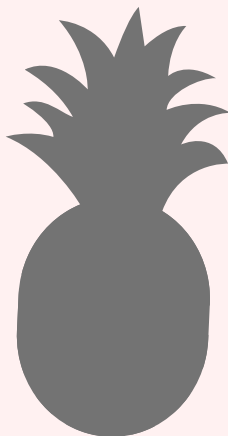
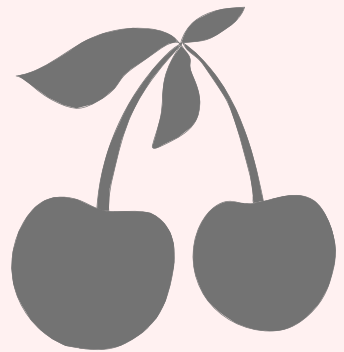
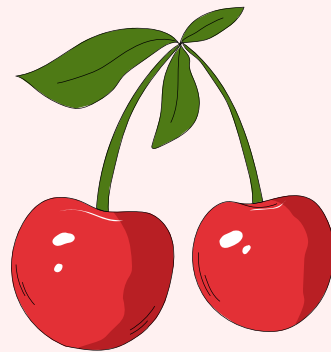
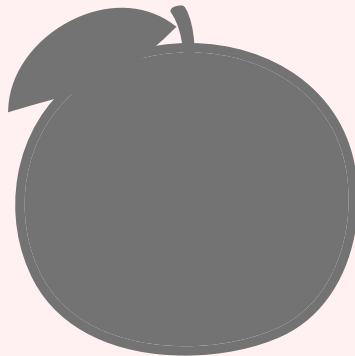
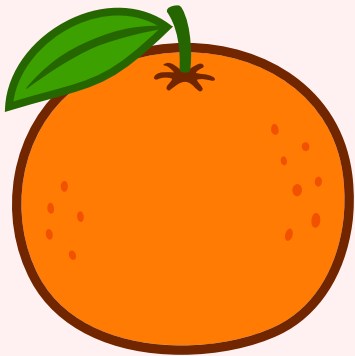
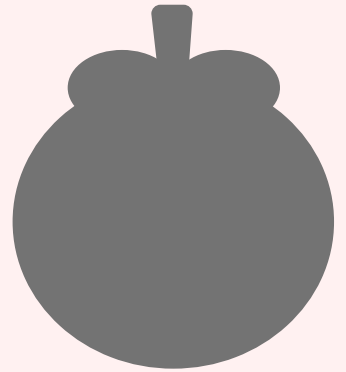
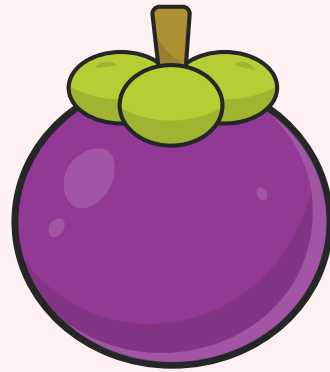
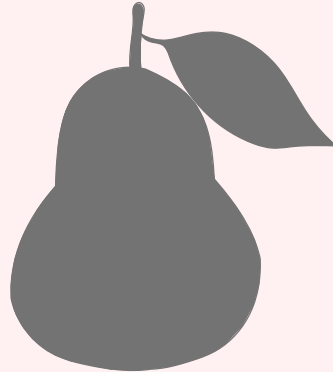
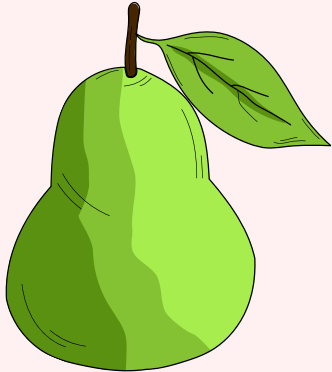


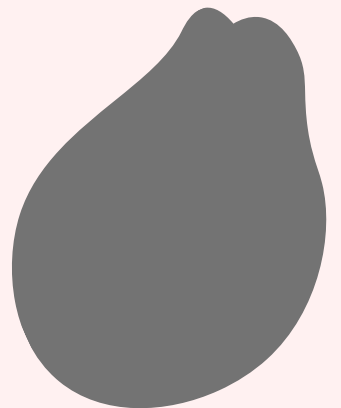
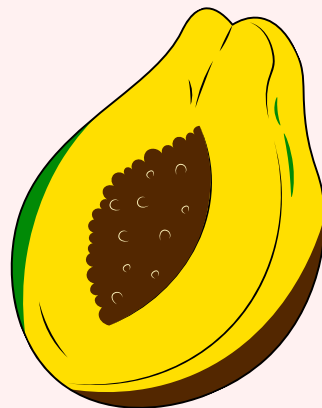
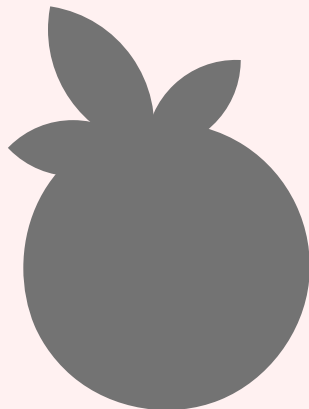
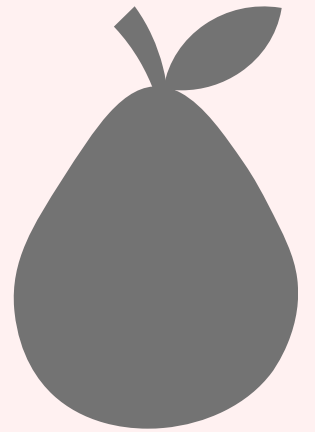
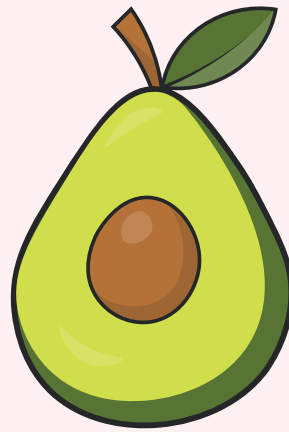
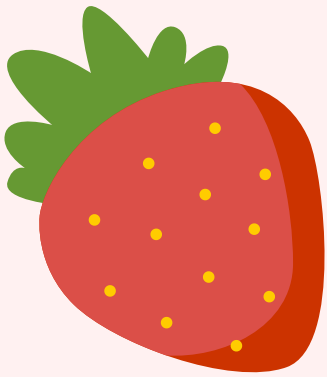
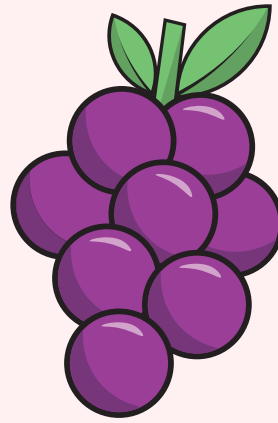
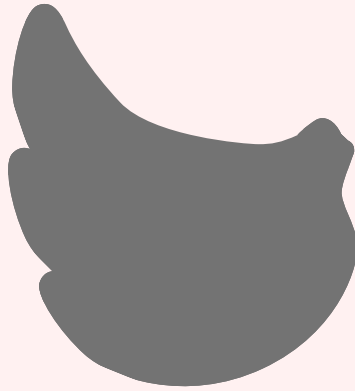
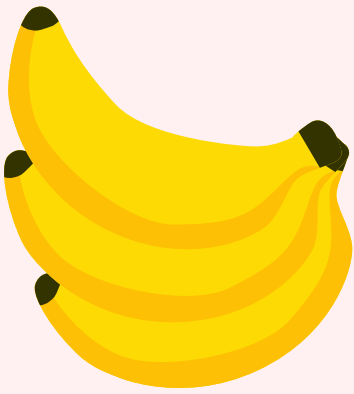
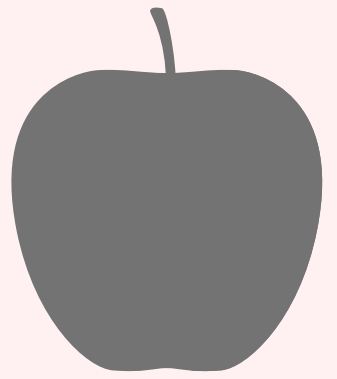
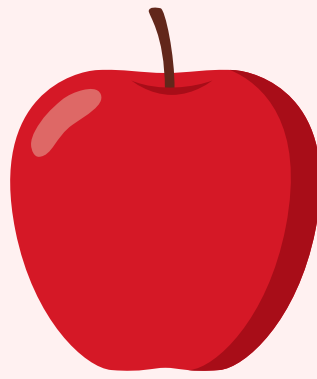
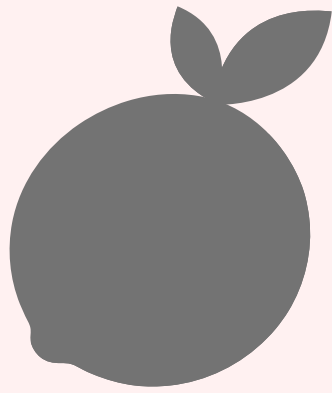
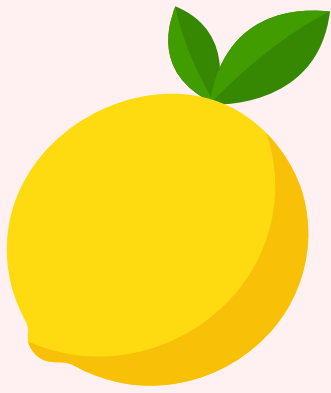


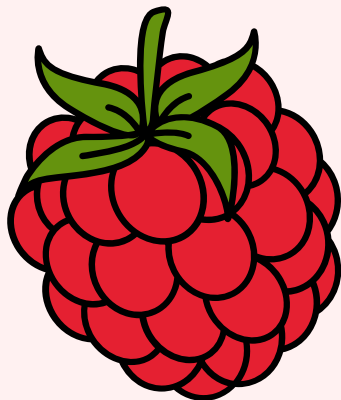
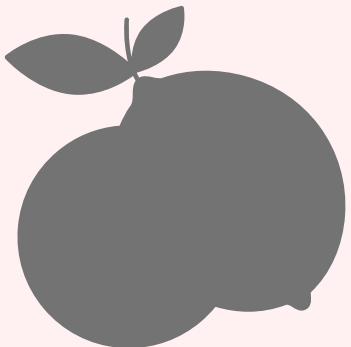
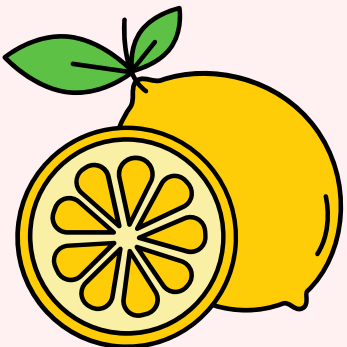
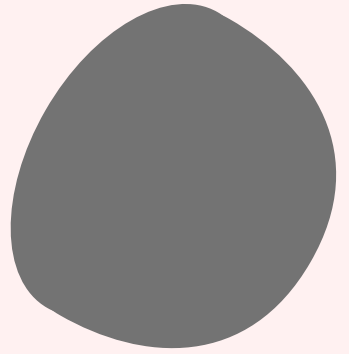
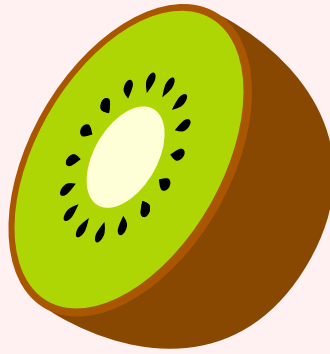
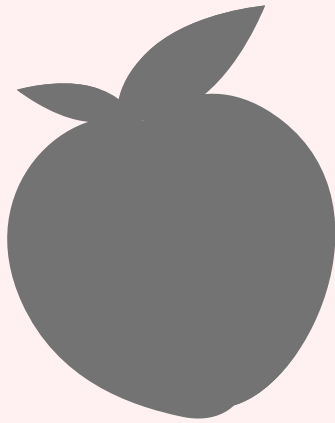
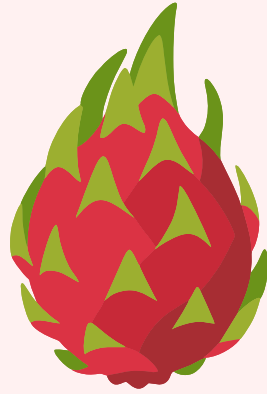
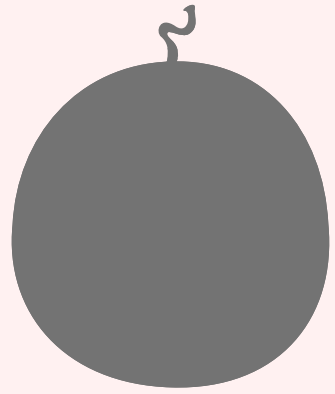
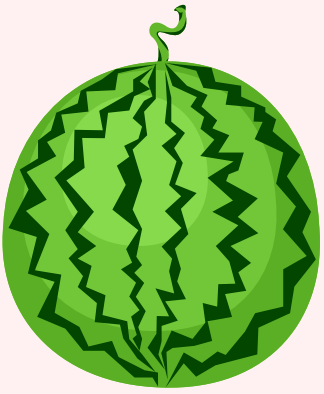
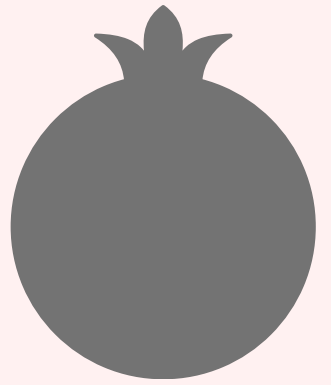
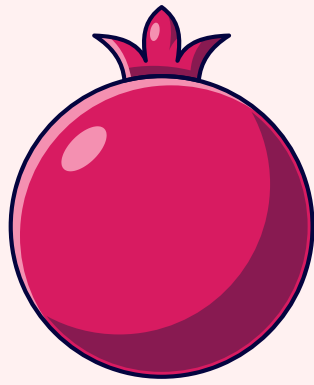
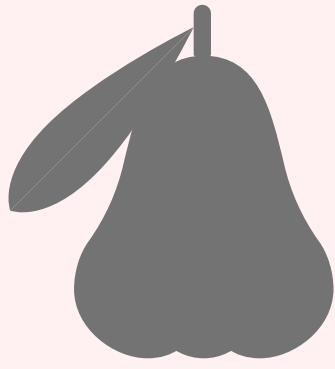
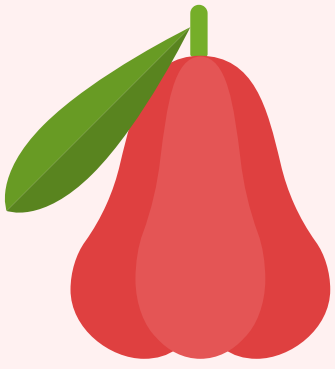
FRUIT SHADOW MATCH

Place all colorful cards on one side and all shadow cards on the other side, face down. Flip one colorful card and one shadow card. Keep the pair if they match; if not, turn them back over.

Keep matching until all pairs are found.





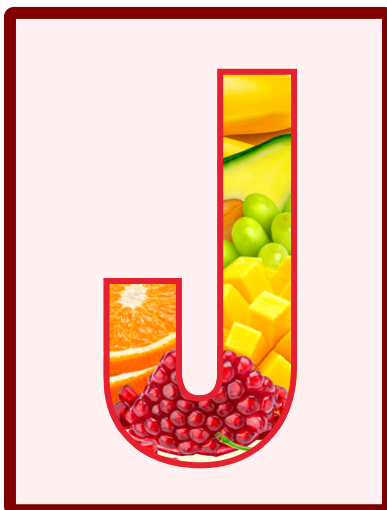


FRUIT ALPHABET MATCH

Mix the cards and place them face down. Turn over one letter and one picture. If they match (A-Apple), keep them. If not, flip back.

When all pairs are found, the game ends.

(LETTER CARDS)



FRUIT ALPHABET MATCH

Mix the cards and place them face down. Turn over one letter and one picture. If they match (A-Apple), keep them. If not, flip back.

When all pairs are found, the game ends.

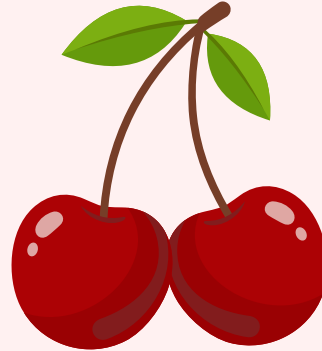
(LETTER CARDS)



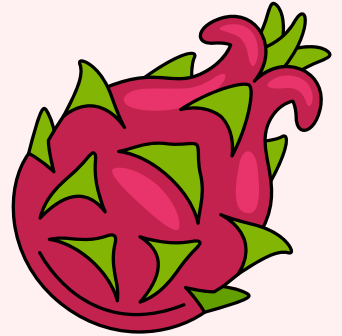
APPLE



BANANA



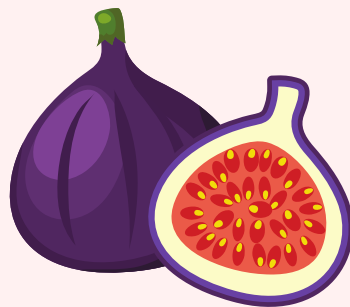
CHERRY



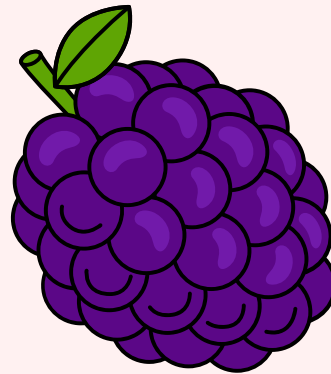
DRAGON FRUIT



ELDERBERRY



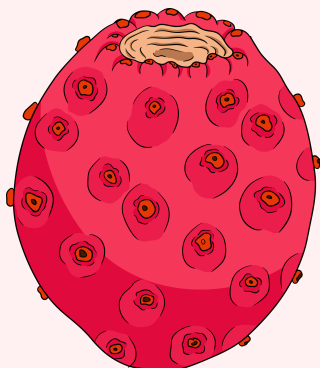
FIG



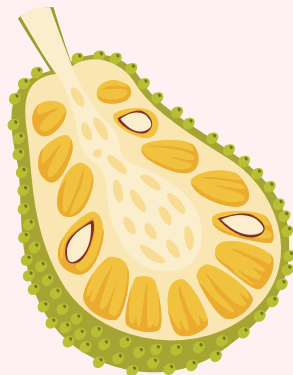
GRAPES



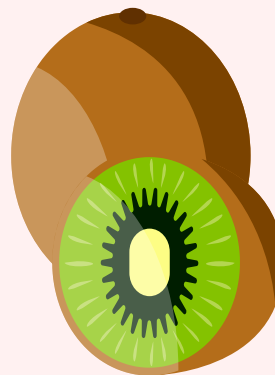
HONEYDEW



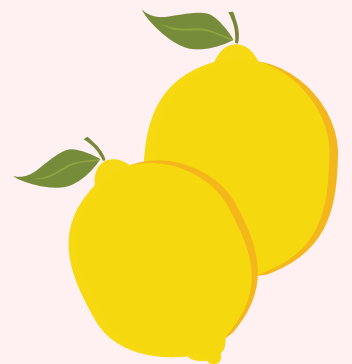
INDIAN FIG



JACKFRUIT



KIWI



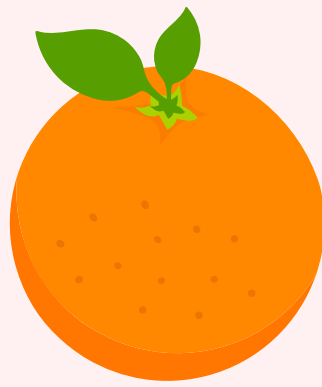
LEMON



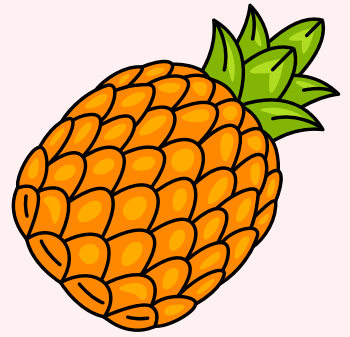
MANGO



NECTARINE



ORANGE



PINEAPPLE



QUINCE



RASPBERRY



STRAWBERRY



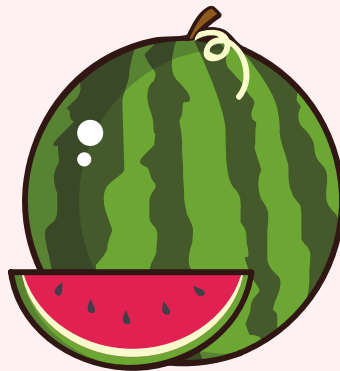
TAMARIND



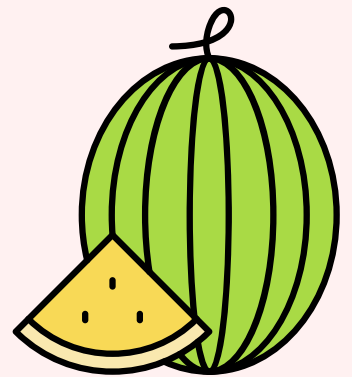
UGLI FRUIT



VANILLA BEAN



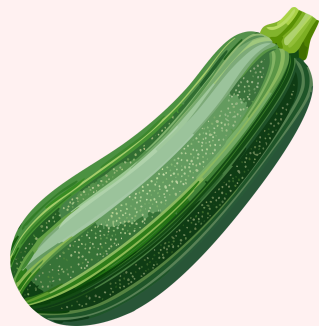
WATERMELON



XIGUA



**YELLOW PASSION
FRUIT**



ZUCCHINI

FRUIT COUNT & MATCH

Kids match number cards with picture cards showing the same quantity. Shuffle the cards and lay them face down in a grid. Players flip over two cards on their turn. If the number matches the quantity of Fruits items, keep the pair; if not, turn them back over. Keep matching until all pairs are found.

(NUMBER CARDS)



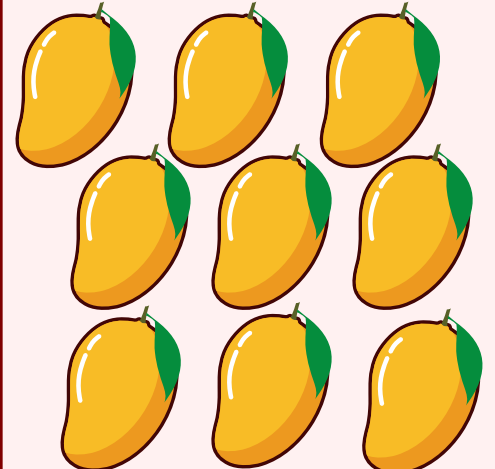
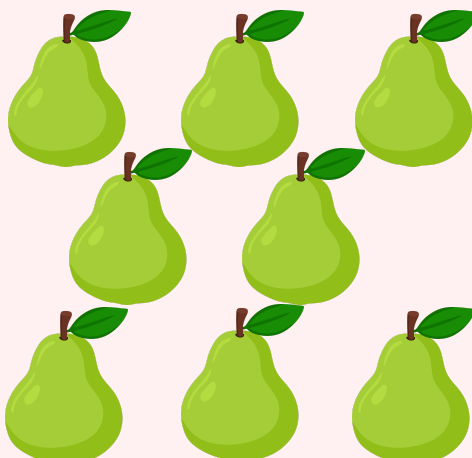
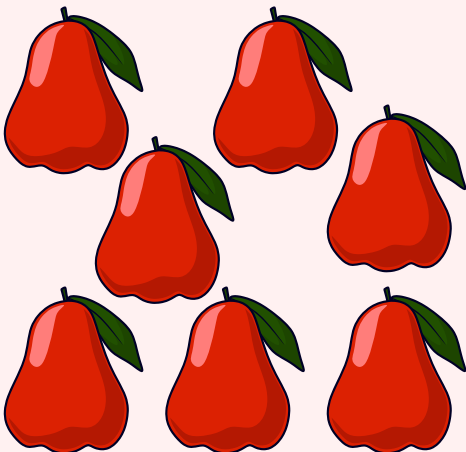
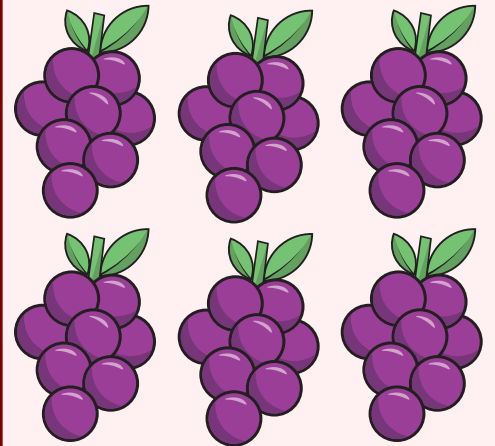
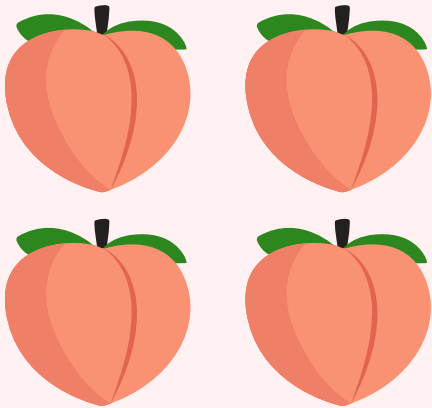
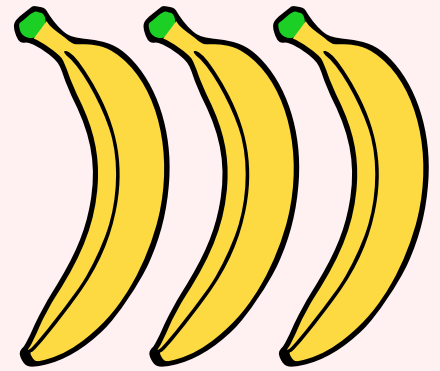
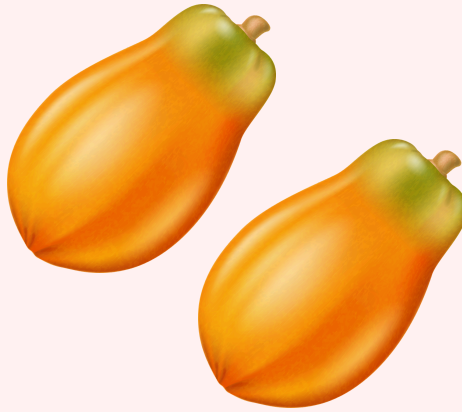
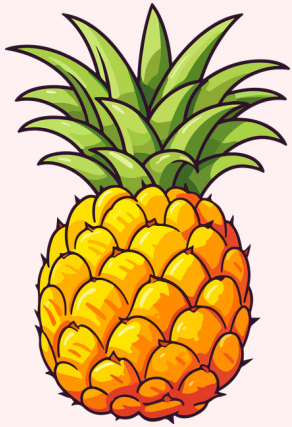


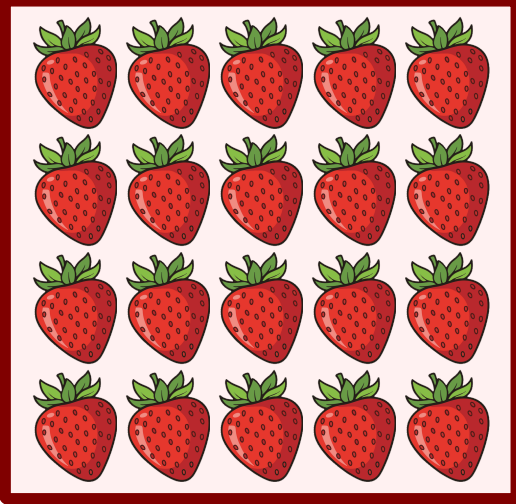
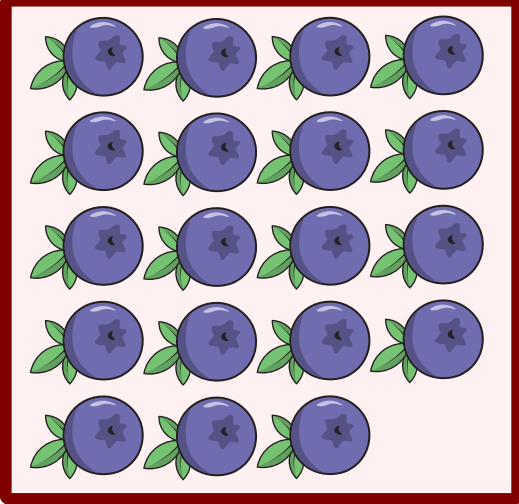
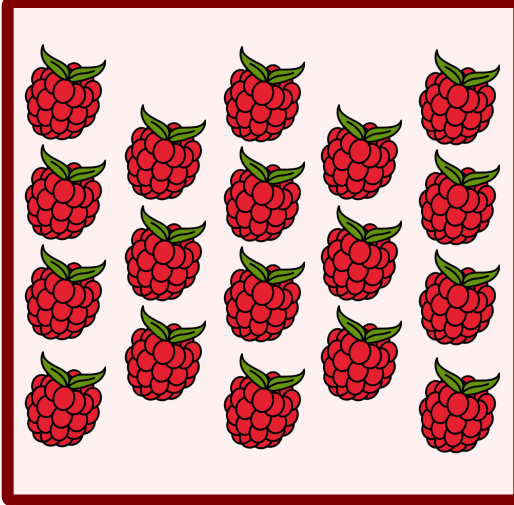
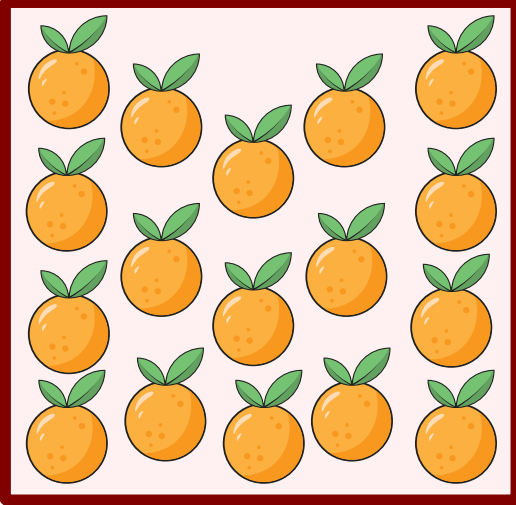
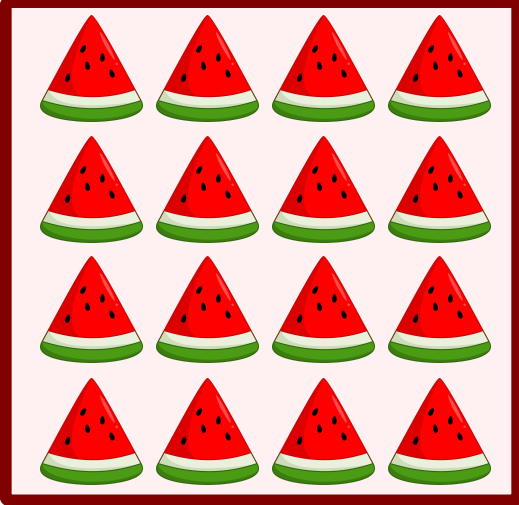
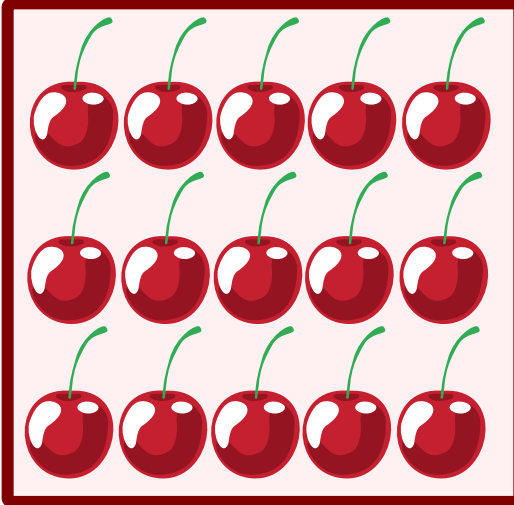
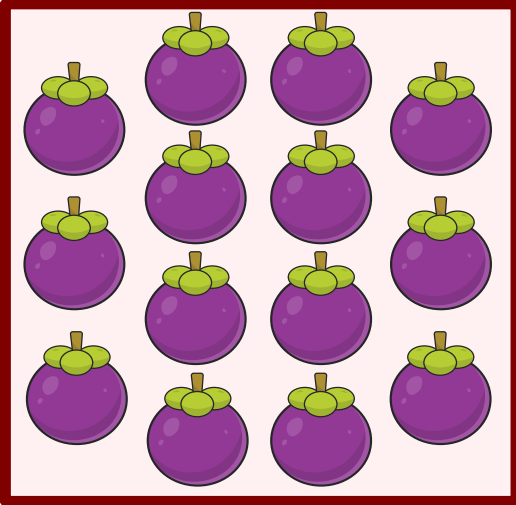
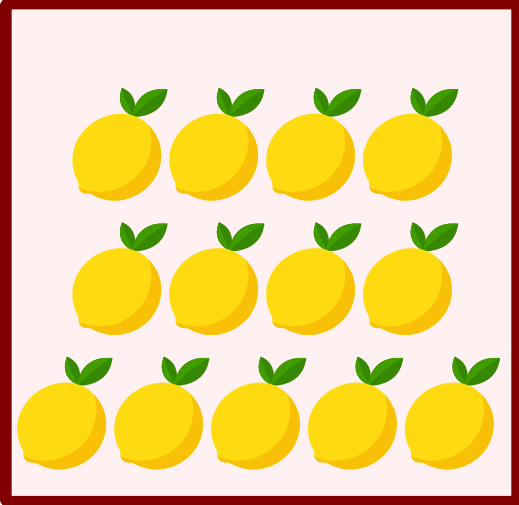
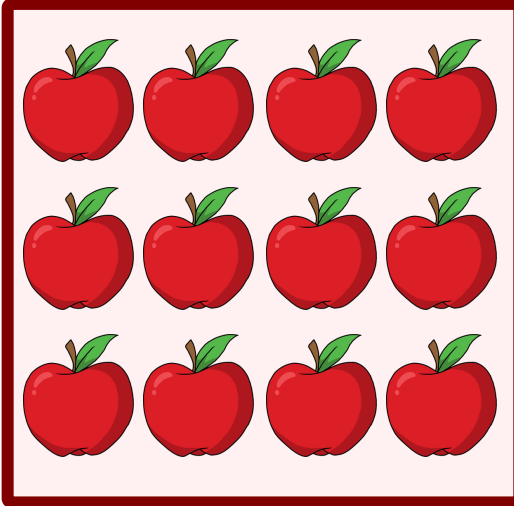
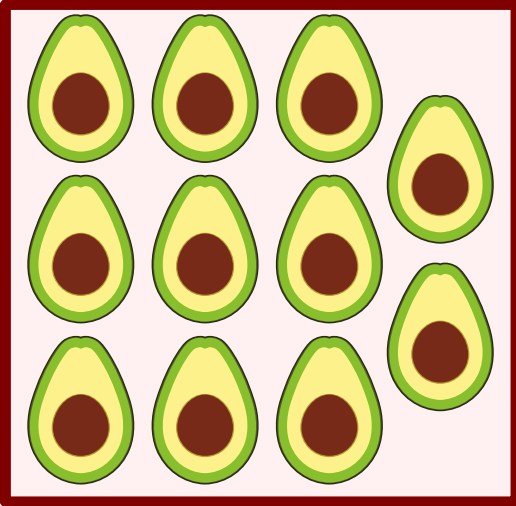
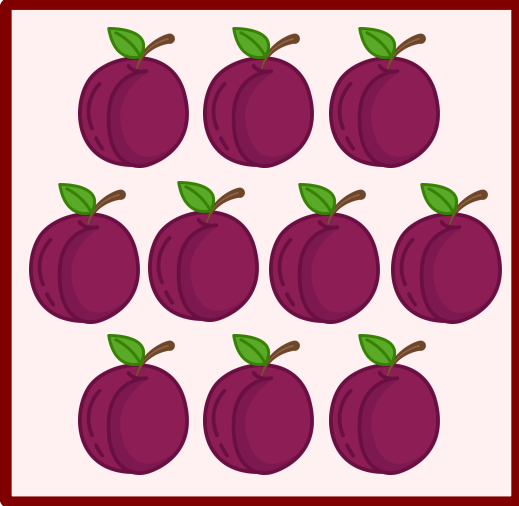
It can be played with two sets—a small-number set for younger kids, and both the small- and large-number sets for older kids

FRUIT COUNT & MATCH

Kids match number cards with picture cards showing the same quantity. Shuffle the cards and lay them face down in a grid. Players flip over two cards on their turn. If the number matches the quantity of Fruits items, keep the pair; if not, turn them back over. Keep matching until all pairs are found.

(PICTURE CARDS)





It can be played with two sets—a small-number set for younger kids, and both the small- and large-number sets for older kids